

For Research Use Only

CoraLite®594-conjugated IMP3 Monoclonal antibody



Catalog Number:CL594-66247

Basic Information

Catalog Number: CL594-66247	GenBank Accession Number: BC020557	Purification Method: Protein A purification
Size: 100ul , Concentration: 1000 µg/ml by Nanodrop;	GeneID (NCBI): 55272	CloneNo.: 1E7D6
Source: Mouse	Full Name: IMP3, U3 small nucleolar ribonucleoprotein, homolog (yeast)	Recommended Dilutions: IF 1:50-1:500
Isotype: IgG2b	Calculated MW: 184 aa, 22 kDa	Excitation/Emission maxima wavelengths: 593 nm / 614 nm
Immunogen Catalog Number: AG23602	Observed MW: 22 kDa	

Applications

Tested Applications: IF	Positive Controls: IF : HepG2 cells,
Species Specificity: human	

Background Information

IMP3 is a member of the IGF-II mRNA binding protein (IMP) family that consist of IMP1, IMP2, and IMP3. IMP3 is an oncofetal protein associated with aggressive and advanced tumors and is specifically expressed in malignant tumors but not found in benign tissues [PMID:22497850]. IMP3 forms a ternary complex with IMP4 and MPP10 (MPHOSPH10) that interacts with U3 small nucleolar RNA (snoRNA), which is required for the early cleavage steps in pre-rRNA processing[PMID: 12655004]. CoraLite594-Conjugated IMP3 antibody can stain red. Ex: 593nm, Em: 614nm

Storage

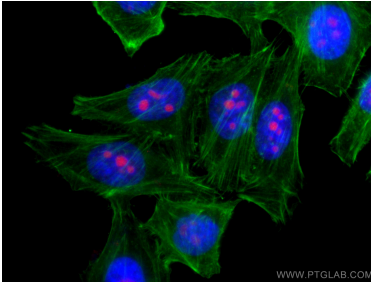
Storage:
Store at -20°C. Avoid exposure to light. Stable for one year after shipment.
Storage Buffer:
PBS with 50% Glycerol, 0.05% Proclin300, 0.5% BSA, pH 7.3.
Aliquoting is unnecessary for -20°C storage

*** 20ul sizes contain 0.1% BSA

For technical support and original validation data for this product please contact:
T: 1 (888) 4PTGLAB (1-888-478-4522) (toll free in USA), or 1(312) 455-8498 (outside USA) E: proteintech@ptglab.com W: ptglab.com

This product is exclusively available under Proteintech Group brand and is not available to purchase from any other manufacturer.

Selected Validation Data



Immunofluorescent analysis of (4% PFA) fixed HepG2 cells using CoraLite®594-conjugated IMP3 antibody (CL594-66247, Clone: 1E7D6) at dilution of 1:200, CL488-Phalloidin (green).