

For Research Use Only

# CoraLite®594-conjugated Alpha E-Catenin Monoclonal antibody



Catalog Number:CL594-66221

## Basic Information

<b>Catalog Number:</b> CL594-66221	<b>GenBank Accession Number:</b> BC031262	<b>Purification Method:</b> Protein G purification
<b>Size:</b> 100ul , Concentration: 1000 µg/ml by Nanodrop;	<b>GeneID (NCBI):</b> 1495	<b>CloneNo.:</b> 2B7B8
<b>Source:</b> Mouse	<b>Full Name:</b> catenin (cadherin-associated protein), alpha 1, 102kDa	<b>Excitation/Emission maxima wavelengths:</b> 588 nm / 604 nm
<b>Isotype:</b> IgG1	<b>Calculated MW:</b> 906 aa, 100 kDa	
<b>Immunogen Catalog Number:</b> AG23603	<b>Observed MW:</b> 95-100 kDa	

## Applications

**Tested Applications:**  
FC (Intra)

**Species Specificity:**  
human, mouse

## Background Information

Alpha catenin is an essential component of adherens junctions that connects E-cadherin-β-catenin complexes with the actin cytoskeleton. It also recruits a range of other important proteins to developing intercellular junctions. Three alpha catenins exist in human: alpha-E-catenin, alpha-N-catenin, and alpha-T-catenin, which share substantial amino-acid sequence similarity but have distinct tissue distribution. alpha-E-catenin is ubiquitously expressed, alpha-N-catenin is restricted to neuronal tissue, and alpha-T-catenin is primarily expressed in heart tissue. Reduced levels of alpha-E-catenin protein seem to be characteristic of many different human cancers, including malignant tumours of the breast, colon, stomach, oesophagus, bladder and liver. In addition, the loss of alpha-E-catenin often correlates with the degree of tumour differentiation and metastasis.

## Storage

**Storage:**  
Store at -20°C. Avoid exposure to light. Stable for one year after shipment.

**Storage Buffer:**  
PBS with 50% Glycerol, 0.05% Proclin300, 0.5% BSA, pH 7.3.

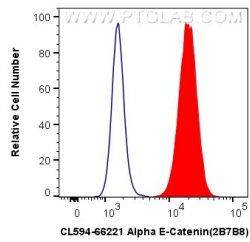
Aliquoting is unnecessary for -20°C storage

\*\*\* 20ul sizes contain 0.1% BSA

For technical support and original validation data for this product please contact:  
T: 1 (888) 4PTGLAB (1-888-478-4522) (toll free in USA), or 1(312) 455-8498 (outside USA) E: proteintech@ptglab.com W: ptglab.com

This product is exclusively available under Proteintech Group brand and is not available to purchase from any other manufacturer.

## Selected Validation Data



$1 \times 10^6$  MCF-7 cells were intracellularly stained with 0.8  $\mu$ g CoraLite<sup>®</sup>594 Anti-Human Alpha E-Catenin (CL594-66221, Clone:2B7B8) (red), or 0.8  $\mu$ g CoraLite<sup>®</sup>594 Mouse IgG1 Isotype Control (MOPC-21) (CL594-65124, Clone: MOPC-21) (blue). Cells were fixed with 4% PFA and permeabilized with Flow Cytometry Perm Buffer (PF00011-C).