

For Research Use Only

CoraLite®594-conjugated EPLIN Monoclonal antibody



Catalog Number: CL594-66071

Featured Product

Basic Information

Catalog Number: CL594-66071	GenBank Accession Number: BC001247	Purification Method: Protein G purification
Size: 100ul , Concentration: 924 µg/ml by Nanodrop;	GeneID (NCBI): 51474	CloneNo.: 6E6E6
Source: Mouse	Full Name: LIM domain and actin binding 1	Recommended Dilutions: IF 1:50-1:500
Isotype: IgG1	Calculated MW: 85 kDa	Excitation/Emission maxima wavelengths: 593 nm / 614 nm
Immunogen Catalog Number: AG13288	Observed MW: 90 kDa, 110 kDa	

Applications

Tested Applications: IF	Positive Controls: IF : HeLa cells,
Species Specificity: human, rat	

Background Information

EPLIN is a cytoskeletal protein that is preferentially expressed in epithelial cells and is implicated in regulation of cytoskeletal dynamics and cytokinesis. In human, there are two known isoforms, EPLIN-a and -b, generated by alternative promoter usage from a single gene. EPLIN-a expression is often down-regulated in cancerous cells and tissues. This antibody recognizes both of isoforms of EPLIN.

Storage

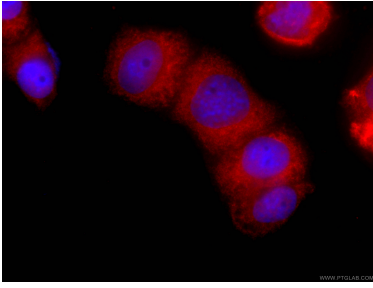
Storage:
Store at -20°C. Avoid exposure to light. Stable for one year after shipment.
Storage Buffer:
PBS with 50% Glycerol, 0.05% Proclin300, 0.5% BSA, pH 7.3.
Aliquoting is unnecessary for -20°C storage

*** 20ul sizes contain 0.1% BSA

For technical support and original validation data for this product please contact:
T: 1 (888) 4PTGLAB (1-888-478-4522) (toll free in USA), or 1(312) 455-8498 (outside USA) E: proteintech@ptglab.com W: ptglab.com

This product is exclusively available under Proteintech Group brand and is not available to purchase from any other manufacturer.

Selected Validation Data



Immunofluorescent analysis of (-20°C Ethanol) fixed HeLa cells using CL594-66071 (EPLIN antibody) at dilution of 1:100.