

For Research Use Only

CoraLite®594-conjugated EMILIN1 Monoclonal antibody



Catalog Number:CL594-60047

Basic Information

| | | |
|---|--|---|
| Catalog Number: CL594-60047 | GenBank Accession Number: BC007530 | Purification Method: Protein G purification |
| Size: 100ul , Concentration: 1000 µg/ml by Nanodrop; | GeneID (NCBI): 11117 | CloneNo.: 2A5C8 |
| Source: Mouse | Full Name: elastin microfibril interfacier 1 | Recommended Dilutions: IF 1:50-1:500 |
| Isotype: IgG1 | Calculated MW: 107 kDa | Excitation/Emission maxima wavelengths: 593 nm / 614 nm |
| Immunogen Catalog Number: AG1016 | Observed MW: 120-130 kDa | |

Applications

| | |
|--------------------------------------|---|
| Tested Applications: IF | Positive Controls: IF : human ovary tumor tissue, |
| Species Specificity: human | |

Background Information

EMILIN1, also named as EMILIN, EMILIN-1, gp115 and EMI, may be responsible for anchoring smooth muscle cells to elastic fibers, and may be involved not only in the formation of the elastic fiber, but also in the processes that regulate vessel assembly. It has cell adhesive capacity. EMILIN1 is a negative regulator of the transforming growth factor-beta (TGF-beta) signaling, which is involved in blood pressure (BP) homeostasis (PMID:20186130). EMILIN1 may play a key role in hypertensive vascular remodeling. TGFβ proteins are the main regulators of blood vessel development and maintenance, and EMILIN1 inhibits TGFβ signaling by binding specifically to the proTGFβ precursor and preventing its maturation by furin convertases in the extracellular space (PMID:19922630).

Storage

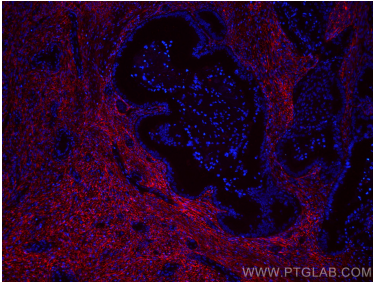
Storage:
Store at -20°C. Avoid exposure to light.
Storage Buffer:
PBS with 50% Glycerol, 0.05% Proclin300, 0.5% BSA, pH 7.3.
Aliquoting is unnecessary for -20°C storage

*** 20ul sizes contain 0.1% BSA

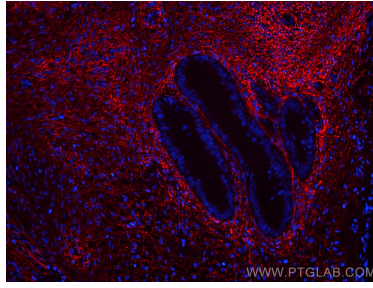
For technical support and original validation data for this product please contact:
T: 1 (888) 4PTGLAB (1-888-478-4522) (toll free in USA), or 1(312) 455-8498 (outside USA) E: proteintech@ptglab.com W: ptglab.com

This product is exclusively available under Proteintech Group brand and is not available to purchase from any other manufacturer.

Selected Validation Data



Immunofluorescent analysis of (4% PFA) fixed human ovary tumor tissue using CoraLite®594 EMILIN1 antibody (CL594-60047, Clone: 2A5C8) at dilution of 1:200.



Immunofluorescent analysis of (4% PFA) fixed human ovary tumor tissue using CoraLite®594 EMILIN1 antibody (CL594-60047, Clone: 2A5C8) at dilution of 1:200.