

For Research Use Only

CoraLite®594-conjugated CEP63 Polyclonal antibody



Catalog Number: CL594-16268

Featured Product

Basic Information

Catalog Number: CL594-16268	GenBank Accession Number: BC014050	Purification Method: Antigen affinity purification
Size: 100ul , Concentration: 1000 µg/ml by Nanodrop;	GeneID (NCBI): 80254	Recommended Dilutions: IF 1:50-1:500
Source: Rabbit	Full Name: centrosomal protein 63kDa	Excitation/Emission maxima wavelengths: 593 nm / 614 nm
IsoType: IgG	Calculated MW: 703 aa, 81 kDa	
Immunogen Catalog Number: AG9335	Observed MW: 57-75 kDa	

Applications

Tested Applications: IF	Positive Controls: IF : hTERT-RPE1 cells,
Species Specificity: human, mouse, rat, Canine	

Background Information

CEP63 is a 63 kDa centrosomal protein. It is required for normal spindle assembly. It maintains centrosome numbers through centrosomal recruitment of CEP152. CEP63 recruits CDK1 to centrosomes. It plays a role in DNA damage response. This antibody can recognize all the four isoforms of CEP63 (56 kDa, 58 kDa, 63 kDa and 81 kDa).

Storage

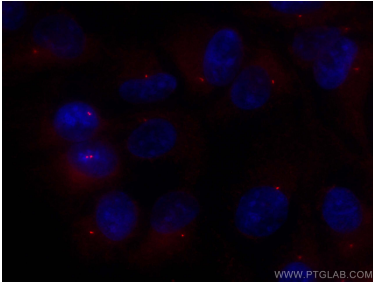
Storage:
Store at -20°C. Avoid exposure to light. Stable for one year after shipment.
Storage Buffer:
PBS with 50% Glycerol, 0.05% Proclin300, 0.5% BSA, pH 7.3.
Aliquoting is unnecessary for -20°C storage

*** 20ul sizes contain 0.1% BSA

For technical support and original validation data for this product please contact:
T: 1 (888) 4PTGLAB (1-888-478-4522) (toll free in USA), or 1(312) 455-8498 (outside USA)
E: proteintech@ptglab.com
W: ptglab.com

This product is exclusively available under Proteintech Group brand and is not available to purchase from any other manufacturer.

Selected Validation Data



Immunofluorescent analysis of (-20°C Methanol) fixed hTERT-RPE1 cells using CoraLite® 594 CEP63 antibody (CL594-16268) at dilution of 1:100.