

For Research Use Only

CoraLite®594-conjugated PSMB8 Polyclonal antibody



Catalog Number:CL594-14859

Basic Information

Catalog Number: CL594-14859	GenBank Accession Number: BC001114	Purification Method: Antigen affinity purification
Size: 100ul , Concentration: 1000 µg/mL by Nanodrop;	GeneID (NCBI): 5696	Recommended Dilutions: IF 1:50-1:500
Source: Rabbit	Full Name: proteasome (prosome, macropain) subunit, beta type, 8 (large multifunctional peptidase 7)	Excitation/Emission maxima wavelengths: 588 nm / 604 nm
Isotype: IgG	Calculated MW: 30 kDa	
Immunogen Catalog Number: AG6660	Observed MW: 23 kDa	

Applications

Tested Applications: IF	Positive Controls: IF : HepG2 cells,
Species Specificity: human, mouse	

Background Information

PSMB8(Proteasome subunit beta type-8) is also named as LMP7, PSMB5i, RING10, Y2 and belongs to the peptidase T1B family. The gene encodes the chymotrypsin-like catalytic subunit of the immunoproteasome(PMID: 19525961). PSMB8 has a role in controlling pathogenic immune responses and may be a target in autoimmune disorders. Its prosequence is not essential for incorporation of PSMB8 into the maturing proteasome, but it increased the efficiency of PSMB8 incorporation and proteasome maturation(PMID: 10926487). The pro-PSMB8 is a 276aa protein with the molecular mass of 30 kDa, and the mature form is about 23kDa due to the 72aa propeptide cleaved. Defects in PSMB8 are the cause of Nakajo syndrome (NKJO).

Storage

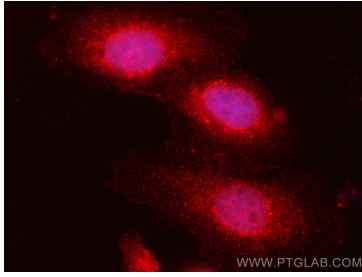
Storage:
Store at -20°C. Avoid exposure to light. Stable for one year after shipment.
Storage Buffer:
PBS with 50% Glycerol, 0.05% Proclin300, 0.5% BSA, pH 7.3.
Aliquoting is unnecessary for -20°C storage

*** 20ul sizes contain 0.1% BSA

For technical support and original validation data for this product please contact:
T: 1 (888) 4PTGLAB (1-888-478-4522) (toll free in USA), or 1(312) 455-8498 (outside USA)
E: proteintech@ptglab.com
W: ptglab.com

This product is exclusively available under Proteintech Group brand and is not available to purchase from any other manufacturer.

Selected Validation Data



Immunofluorescent analysis of (4% PFA) fixed HepG2 cells using Coralite@594 PSMB8 antibody (CL594-14859) at dilution of 1:200.