

For Research Use Only



CoraLite®594-conjugated Hemoglobin Alpha Polyclonal antibody

Catalog Number: ~~CL594-14537~~

Featured Product

Basic Information

Catalog Number:
CL594-14537

Size:
100ul , Concentration: 1000 µg/ml by
Nanodrop;

Source:
Rabbit

Isotype:
IgG

Immunogen Catalog Number:
AG6040

GenBank Accession Number:
BC050661

GeneID (NCBI):
3039

UNIPROT ID:
P69905

Full Name:
hemoglobin, alpha 1

Calculated MW:
15 kDa

Observed MW:
14-16 kDa, 27 kDa

Purification Method:
Antigen affinity purification

Recommended Dilutions:
IF 1:50-1:500

Excitation/Emission maxima
wavelengths:
588 nm / 604 nm

Applications

Tested Applications:
FC (Intra), IF

Species Specificity:
human, mouse, rat

Positive Controls:

IF : human appendicitis tissue,

Background Information

The hemoglobin molecule is a tetramer consisting of two alpha- and two beta-globin-like chains. HBA1 (hemoglobin alpha chain) protein is a alpha-type chain of hemoglobin encoded by two independent genes (HBA1 and HBA2) whose coding sequences are identical. Two alpha chains coupled with two beta chains constitute the adult hemoglobin (HbA or $\alpha_2\beta_2$). HBA1 is also the component of fetal hemoglobin (HbF or $\alpha_2\gamma_2$). This antibody detects a major band around 14-16 kDa in the western blot analysis of heart tissue and K-562 cells. A higher band around 26-27 kDa can also be observed occasionally, which may represent the dimer form of HBA1 (PMID: 20836851). This antibody may cross-react with other hemoglobin chains.

Storage

Storage:

Store at -20°C. Avoid exposure to light. Stable for one year after shipment.

Storage Buffer:

PBS with 50% Glycerol, 0.05% Proclin300, 0.5% BSA, pH 7.3.

Aliquoting is unnecessary for -20°C storage

*** 20ul sizes contain 0.1% BSA

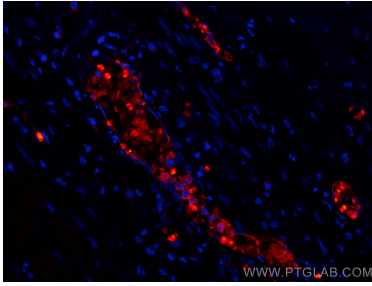
For technical support and original validation data for this product please contact:

T: 1 (888) 4PTGLAB (1-888-478-4522) (toll free
in USA), or 1(312) 455-8498 (outside USA)

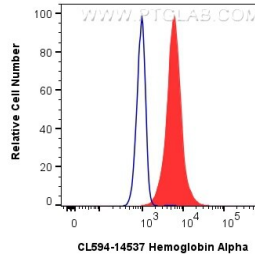
E: proteintech@ptglab.com
W: ptglab.com

This product is exclusively available under Proteintech Group brand and is not available to purchase from any other manufacturer.

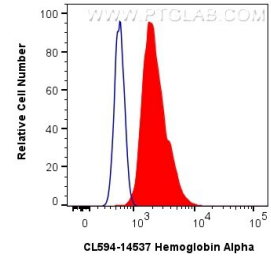
Selected Validation Data



Immunofluorescent analysis of (4% PFA) fixed human appendicitis tissue using CoraLite®594 Hemoglobin Alpha antibody (CL594-14537) at dilution of 1:200.



1X10⁶ K-562 cells were intracellularly stained with 0.2 ug CoraLite®594 Anti-Human Hemoglobin Alpha (CL594-14537) (red), or 0.2 ug CoraLite®594-conjugated Rabbit IgG control Rabbit PolyAb (CL594-30000, Clone:) (blue). Cells were fixed with 4% PFA and permeabilized with Flow Cytometry Perm Buffer (PF00011-C).



1X10⁶ TF-1 cells were intracellularly stained with 0.4 ug CoraLite®594 Anti-Human Hemoglobin Alpha (CL594-14537) (red), or 0.4 ug CoraLite®594-conjugated Rabbit IgG control Rabbit PolyAb (CL594-30000, Clone:) (blue). Cells were fixed with 4% PFA and permeabilized with Flow Cytometry Perm Buffer (PF00011-C).