

For Research Use Only

# CoraLite®594-conjugated PFKFB3-Specific Polyclonal antibody



Catalog Number:CL594-13763

Featured Product

## Basic Information

<b>Catalog Number:</b> CL594-13763	<b>GenBank Accession Number:</b> BC040482	<b>Purification Method:</b> Antigen affinity purification
<b>Size:</b> 100ul , Concentration: 1000 µg/ml by Nanodrop;	<b>GeneID (NCBI):</b> 5209	<b>Recommended Dilutions:</b> IF 1:50-1:500
<b>Source:</b> Rabbit	<b>Full Name:</b> 6-phosphofructo-2-kinase/fructose-2,6-biphosphatase 3	<b>Excitation/Emission maximum wavelengths:</b> 593 nm / 614 nm
<b>Isotype:</b> IgG	<b>Calculated MW:</b> 520 aa, 60 kDa	
<b>Immunogen Catalog Number:</b> AG4744	<b>Observed MW:</b> 58 kDa	

## Applications

<b>Tested Applications:</b> IF	<b>Positive Controls:</b> IF : HepG2 cells,
<b>Species Specificity:</b> human, mouse, rat	

## Background Information

PFKFB3, also named as NY-REN-56 and iPFK-2, plays a role in glucose metabolism. It synthesis and degradation of fructose 2,6-bisphosphate. Endogenously generated adenosine cooperates with bacterial components to increase PFKFB3 isozyme activity, resulting in greater fructose 2,6-bisphosphate accumulation. PFKFB3 is required for increased growth, metabolic activity and is regulated through active JAK2 and STAT5. This antibody is specific to PFKFB3.

## Storage

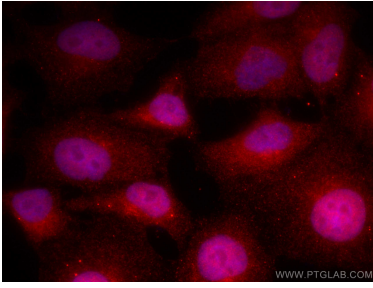
**Storage:**  
Store at -20°C. Avoid exposure to light.  
**Storage Buffer:**  
PBS with 50% Glycerol, 0.05% Proclin300, 0.5% BSA, pH 7.3.  
Aliquoting is unnecessary for -20°C storage

\*\*\* 20ul sizes contain 0.1% BSA

For technical support and original validation data for this product please contact:  
T: 1 (888) 4PTGLAB (1-888-478-4522) (toll free in USA), or 1(312) 455-8498 (outside USA)  
E: proteintech@ptglab.com  
W: ptglab.com

This product is exclusively available under Proteintech Group brand and is not available to purchase from any other manufacturer.

## Selected Validation Data



Immunofluorescent analysis of (4% PFA) fixed HepG2 cells using Coralite®594 PFKFB3-Specific antibody (CL594-13763) at dilution of 1:200.