

For Research Use Only

CoraLite® Plus 555 Anti-Human CD31 (WM-59)



Catalog Number: CL555-65268

Basic Information

Catalog Number: CL555-65268	GenBank Accession Number: BC022512	Purification Method: Affinity purification
Size: 100tests , 5 µl/test	GeneID (NCBI): 5175	CloneNo.: WM-59
Source: Mouse	Full Name: platelet/endothelial cell adhesion molecule	Excitation/Emission maxima wavelengths: 554 nm / 570 nm
Isotype: IgG1, kappa	Calculated MW: 83 kDa	

Applications

Tested Applications:
FC

Species Specificity:
Human

Background Information

CD31, also known as PECAM1 (Platelet endothelial cell adhesion molecule), is a member of the immunoglobulin gene superfamily of cell adhesion molecules. CD31 is a transmembrane glycoprotein that is highly expressed on the surface of the endothelium, making up a large portion of its intracellular junctions. It is also present on the surface of hematopoietic cells and immune cells including platelets, monocytes, neutrophils, natural killer cells, megakaryocytes and some types of T-cell (PMID: 9011572). As well as its role in cell-cell adhesion, CD31 functions as a signaling receptor, and is involved in important physiological events such as nitric oxide production, regulation of T-cell immunity and tolerance, leukocyte transendothelial migration and inflammation and angiogenesis (PMID: 21183735; 20978210; 17872453; 20634489).

Storage

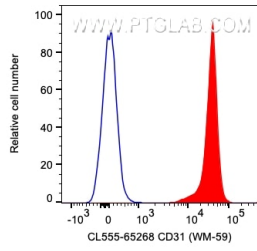
Storage:
Store at 2-8°C. Avoid exposure to light. Stable for one year after shipment.

Storage Buffer:
PBS with 0.09% sodium azide and 0.5% BSA.

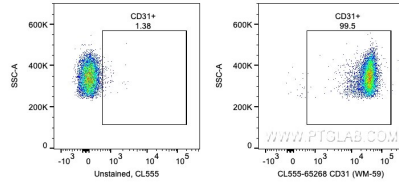
For technical support and original validation data for this product please contact:
T: 1 (888) 4PTGLAB (1-888-478-4522) (toll free in USA), or 1(312) 455-8498 (outside USA) E: proteintech@ptglab.com W: ptglab.com

This product is exclusively available under Proteintech Group brand and is not available to purchase from any other manufacturer.

Selected Validation Data



1X10⁶ human PBMCs were surface stained with 5 ul CoraLite® Plus 555 Anti-Human CD31 (CL555-65268, Clone:WM-59) (red) or unstained. Cells were not fixed. Monocytes were gated.



1X10⁶ human PBMCs were surface stained with 5 ul CoraLite® Plus 555 Anti-Human CD31 (CL555-65268, Clone:WM-59) or unstained. Cells were not fixed. Monocytes were gated.