

For Research Use Only

CoraLite® Plus 555 Anti-Human CD85j / LILRB1 (GHI/75)



Catalog Number: CL555-65238

Basic Information

Catalog Number: CL555-65238	GenBank Accession Number: BC015731	Purification Method: N/A
Size: 100tests , 5 ul/test	GeneID (NCBI): 10859	CloneNo.: GHI/75
Source: Mouse	Full Name: leukocyte immunoglobulin-like receptor, subfamily B (with TM and ITIM domains), member 1	Excitation/Emission maxima wavelengths: 554 nm / 570 nm
Isotype: IgG2b, kappa	Calculated MW: 71 kDa	

Applications

Tested Applications:
FC

Species Specificity:
Human

Background Information

Storage

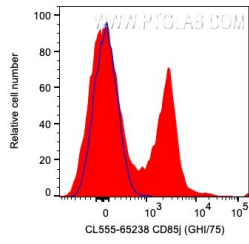
Storage:
Store at 2-8°C. Avoid exposure to light. Stable for one year after shipment.

Storage Buffer:
PBS with 0.09% sodium azide and 0.5% BSA.

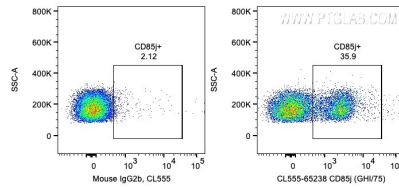
For technical support and original validation data for this product please contact:
T: 1 (888) 4PTGLAB (1-888-478-4522) (toll free in USA), or 1(312) 455-8498 (outside USA) E: proteintech@ptglab.com
W: ptglab.com

This product is exclusively available under Proteintech Group brand and is not available to purchase from any other manufacturer.

Selected Validation Data



1X10⁶ human PBMCs were surface stained with 5 ul CoraLite® Plus 555 Anti-Human CD85j / IL1RB1 (CL555-65238, Clone:GHI/75) or Mouse IgG2b Isotype Control (66360-3-Ig, Clone: K11B8C4B5). Cells were not fixed. Lymphocytes were gated.



1X10⁶ human PBMCs were surface stained with 5 ul CoraLite® Plus 555 Anti-Human CD85j / IL1RB1 (CL555-65238, Clone:GHI/75) or Mouse IgG2b Isotype Control. Cells were not fixed. Lymphocytes were gated.