

For Research Use Only

CoraLite® Plus 555 Anti-Human HLA-DR (L243)



Catalog Number: **CL555-65218**

Basic Information

Catalog Number: CL555-65218	GenBank Accession Number: BC032350	Purification Method: Protein A purification
Size: 100tests , 5 µl/test	GeneID (NCBI): 3122	CloneNo.: L243
Source: Mouse	Full Name: major histocompatibility complex, class II, DR alpha	Excitation/Emission maxima wavelengths: 554 nm / 570 nm
Isotype: IgG2a, kappa	Calculated MW: 254 aa, 29 kDa	

Applications

Tested Applications:
FC

Species Specificity:
Human

Background Information

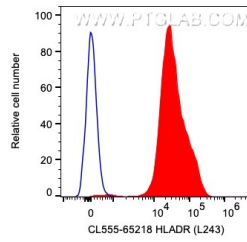
Storage

Storage:
Store at 2-8°C. Avoid exposure to light. Stable for one year after shipment.
Storage Buffer:
PBS with 0.09% sodium azide and 0.5% BSA.

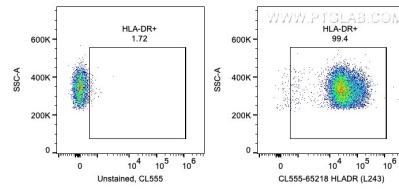
For technical support and original validation data for this product please contact:
T: 1 (888) 4PTGLAB (1-888-478-4522) (toll free in USA), or 1(312) 455-8498 (outside USA) E: proteintech@ptglab.com
W: ptglab.com

This product is exclusively available under Proteintech Group brand and is not available to purchase from any other manufacturer.

Selected Validation Data



1X10⁶ human PBMCs were surface stained with 5 ul CoraLite® Plus 555 Anti-Human HLA-DR (CL555-65218, Clone:L243) (red) or unstained. Cells were not fixed. Monocytes were gated.



1X10⁶ human PBMCs were surface stained with 5 ul CoraLite® Plus 555 Anti-Human HLA-DR (CL555-65218, Clone:L243) or unstained. Cells were not fixed. Monocytes were gated.