

For Research Use Only

CoraLite®555-conjugated Geminin Polyclonal antibody



Catalog Number:CL555-10802

Basic Information

Catalog Number: CL555-10802	GenBank Accession Number: BC005185	Purification Method: Antigen affinity purification
Size: 100ul , Concentration: 1000 µg/ml by Nanodrop;	GeneID (NCBI): 51053	Recommended Dilutions: IF 1:50-1:500
Source: Rabbit	Full Name: geminin, DNA replication inhibitor	Excitation/Emission maxima wavelengths: 555 nm / 570 nm
Isotype: IgG	Calculated MW: 24 kDa	
Immunogen Catalog Number: AG1076	Observed MW: 28-29 kDa	

Applications

Tested Applications: IF	Positive Controls: IF : HepG2 cells,
Species Specificity: human, mouse, rat	

Background Information

GMNN, also designated geminin, contains 212 amino acids and has a destruction box sequence (RRTLKVIQP). GMNN participates in inhibiting DNA replication by preventing the incorporation of MCM complex into pre-replication complex (pre-RC). It is degraded during the metaphase-anaphase transition of cell cycle's mitotic phase, which permits replication in the succeeding cell cycle. GMNN has a broad sedimentation profile ranging from about 25 kDa to 90 kDa, with a major peak at 30 kDa. Scanning of the signals shows that discrete peaks corresponding to apparent mass of 42.5 kDa and 66 kDa are present. (PMID: 15313623)

Storage

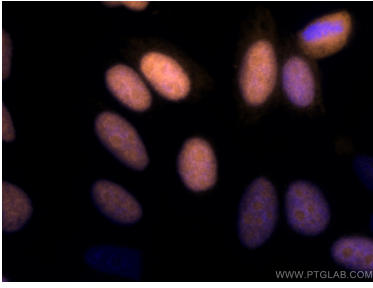
Storage:
Store at -20°C. Avoid exposure to light.
Storage Buffer:
PBS with 50% Glycerol, 0.05% Proclin300, 0.5% BSA, pH 7.3.
Aliquoting is unnecessary for -20°C storage

*** 20ul sizes contain 0.1% BSA

For technical support and original validation data for this product please contact:
T: 1 (888) 4PTGLAB (1-888-478-4522) (toll free in USA), or 1(312) 455-8498 (outside USA)
E: proteintech@ptglab.com
W: ptglab.com

This product is exclusively available under Proteintech Group brand and is not available to purchase from any other manufacturer.

Selected Validation Data



Immunofluorescent analysis of (4% PFA) fixed HepG2 cells using CoraLite®555 Geminin antibody (CL555-10802) at dilution of 1:200.