

For Research Use Only

CoraLite® Plus 488-conjugated MAP2K3 Recombinant antibody



Catalog Number: CL488-80137

Basic Information

Catalog Number: CL488-80137	GenBank Accession Number: BC032478	Purification Method: Protein A purification
Size: 100ul , Concentration: 1000 µg/ml by Nanodrop;	GeneID (NCBI): 5606	CloneNo.: 3010
Source: Rabbit	Full Name: mitogen-activated protein kinase kinase 3	Recommended Dilutions: IF 1:50-1:500
Isotype: IgG	Calculated MW: 347 aa, 39 kDa	Excitation/Emission maxima wavelengths: 488 nm / 515 nm
	Observed MW: 39 kDa	

Applications

Tested Applications: IF	Positive Controls: IF : HeLa cells,
Species Specificity: Human, Mouse, rat	

Background Information

MAP2K3, also named as MKK3, is a member of dual specificity kinase group and serves as a specific activator of p38 MAPK with MKK6. MKK3 can be phosphorylated by cytokines and environmental stress at sites Ser189 and Thr193 by MKKK proteins (MEKK 1-4). MKK3 plays a key role in cell differentiation, motility, division and death. It has been reported that MKK3 targeting may represent an effective and potentially safe therapeutic strategy to selectively kill cancer cells in colorectal cancer patients. (PMID: 31695024, 30770795, 26805700, 8622669)

Storage

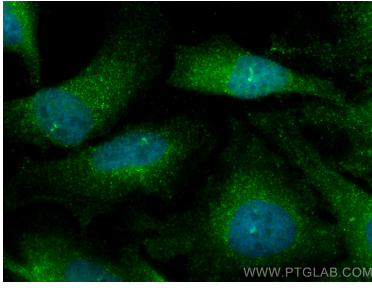
Storage:
Store at -20°C. Avoid exposure to light.
Storage Buffer:
PBS with 50% Glycerol, 0.05% Proclin300, 0.5% BSA, pH 7.3.
Aliquoting is unnecessary for -20°C storage

***** 20ul sizes contain 0.1% BSA**

For technical support and original validation data for this product please contact:
T: 1 (888) 4PTGLAB (1-888-478-4522) (toll free in USA), or 1(312) 455-8498 (outside USA)
E: proteintech@ptglab.com
W: ptglab.com

This product is exclusively available under Proteintech Group brand and is not available to purchase from any other manufacturer.

Selected Validation Data



Immunofluorescent analysis of (4% PFA) fixed HeLa cells using CoralLite® Plus 488 Phospho-MAP2K3 (Ser189) antibody (CL488-80137, Clone: 3O10) at dilution of 1:200.