

For Research Use Only

# CoraLite® Plus 488-conjugated EPS8L2 Monoclonal antibody



Catalog Number:CL488-68330

## Basic Information

<b>Catalog Number:</b> CL488-68330	<b>GenBank Accession Number:</b> BC002474	<b>Purification Method:</b> Protein A purification
<b>Size:</b> 100ul , Concentration: 1000 µg/ml by Nanodrop;	<b>GeneID (NCBI):</b> 64787	<b>CloneNo.:</b> 2E3B1
<b>Source:</b> Mouse	<b>Full Name:</b> EPS8-like 2	<b>Recommended Dilutions:</b> IF 1:50-1:500
<b>Isotype:</b> IgG1	<b>Calculated MW:</b> 715 aa, 81 kDa	<b>Excitation/Emission maxima wavelengths:</b> 493 nm / 522 nm
<b>Immunogen Catalog Number:</b> AG16808	<b>Observed MW:</b> 81 kDa	

## Applications

<b>Tested Applications:</b> IF	<b>Positive Controls:</b> IF : HeLa cells,
<b>Species Specificity:</b> Human, Mouse, Rat	

## Background Information

EPS8L2 (epidermal growth factor receptor pathway substrate 8 L2), a member of the Eps8-like protein family, is a newly identified hair bundle protein that is localized at the tips of stereocilia of both cochlear and vestibular hair cells.

## Storage

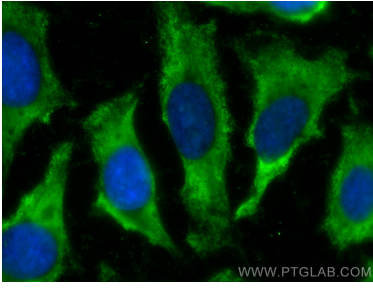
**Storage:**  
Store at -20°C. Avoid exposure to light. Stable for one year after shipment.  
**Storage Buffer:**  
PBS with 50% Glycerol, 0.05% Proclin300, 0.5% BSA, pH 7.3.  
Aliquoting is unnecessary for -20°C storage

**\*\*\* 20ul sizes contain 0.1% BSA**

For technical support and original validation data for this product please contact:  
T: 1 (888) 4PTGLAB (1-888-478-4522) (toll free in USA), or 1(312) 455-8498 (outside USA)      E: proteintech@ptglab.com  
W: ptglab.com

**This product is exclusively available under Proteintech Group brand and is not available to purchase from any other manufacturer.**

## Selected Validation Data



Immunofluorescent analysis of (-20°C Ethanol) fixed HeLa cells using CoraLite® Plus 488 EPS8L2 antibody (CL488-68330, Clone: 2E3B1) at dilution of 1:100.