

For Research Use Only

# CoraLite® Plus 488-conjugated SH3GLB2 Monoclonal antibody



Catalog Number: CL488-68325

## Basic Information

<b>Catalog Number:</b> CL488-68325	<b>GenBank Accession Number:</b> BC014635	<b>Purification Method:</b> Protein G purification
<b>Size:</b> 100ul , Concentration: 1000 µg/ml by Nanodrop;	<b>GeneID (NCBI):</b> 56904	<b>CloneNo.:</b> 4B1A10
<b>Source:</b> Mouse	<b>Full Name:</b> SH3-domain GRB2-like endophilin B2	<b>Recommended Dilutions:</b> IF 1:50-1:500
<b>Isotype:</b> IgG1	<b>Calculated MW:</b> 395 aa, 44 kDa	<b>Excitation/Emission maxima wavelengths:</b> 493 nm / 522 nm
<b>Immunogen Catalog Number:</b> AG8932	<b>Observed MW:</b> 47-50 kDa	

## Applications

<b>Tested Applications:</b> IF	<b>Positive Controls:</b> IF : HeLa cells,
<b>Species Specificity:</b> Human, mouse, rat, pig, rabbit	

## Background Information

SH3GLB2 is an endophilin-related protein family with 395-amino acid protein and contains an N-terminal domain, a central coiled-coil region, and a C-terminal SH3 domain. SH3GLB2 is expressed in many tissues, including skeletal muscle, adipocytes, brain, lung, colon, and mammary gland. SH3GLB2 was expressed in the cytoplasm of transfected HeLa cells and was excluded from nuclei (PMID: 11161816).

## Storage

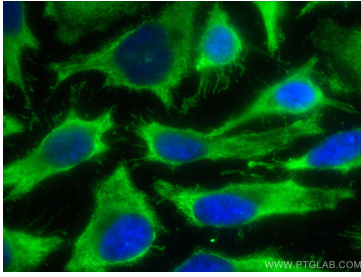
**Storage:**  
Store at -20°C. Avoid exposure to light. Stable for one year after shipment.  
**Storage Buffer:**  
PBS with 50% Glycerol, 0.05% Proclin300, 0.5% BSA, pH 7.3.  
Aliquoting is unnecessary for -20°C storage

\*\*\* 20ul sizes contain 0.1% BSA

For technical support and original validation data for this product please contact:  
T: 1 (888) 4PTGLAB (1-888-478-4522) (toll free in USA), or 1(312) 455-8498 (outside USA)  
E: proteintech@ptglab.com  
W: ptglab.com

This product is exclusively available under Proteintech Group brand and is not available to purchase from any other manufacturer.

## Selected Validation Data



Immunofluorescent analysis of (-20°C Ethanol) fixed HeLa cells using Coralite® Plus 488 SH3GLB2 antibody (CL488-68325, Clone: 4B1A10) at dilution of 1:200.