

For Research Use Only

# CoraLite® Plus 488-conjugated LZTFL1 Monoclonal antibody



Catalog Number:CL488-68281

## Basic Information

<b>Catalog Number:</b> CL488-68281	<b>GenBank Accession Number:</b> BC025988	<b>Purification Method:</b> Protein A purification
<b>Size:</b> 100ul , Concentration: 1000 µg/ml by Nanodrop;	<b>GeneID (NCBI):</b> 54585	<b>CloneNo.:</b> 2C1F6
<b>Source:</b> Mouse	<b>Full Name:</b> leucine zipper transcription factor- like 1	<b>Excitation/Emission maxima wavelengths:</b> 493 nm / 522 nm
<b>Isotype:</b> IgG2a	<b>Calculated MW:</b> 299 aa, 35 kDa	
<b>Immunogen Catalog Number:</b> AG10733	<b>Observed MW:</b> 35 kDa	

## Applications

**Tested Applications:**  
FC  
**Species Specificity:**  
Human

## Background Information

LZTFL1 belongs to the LZTFL1 family. It is an important regulator of BBSome ciliary trafficking and hedgehog signaling. LZTFL1 regulates Ciliary Trafficking of the BBSome and Smoothened.(PMID:22072986)

## Storage

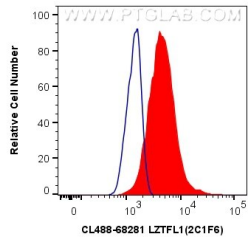
**Storage:**  
Store at -20°C. Avoid exposure to light. Stable for one year after shipment.  
**Storage Buffer:**  
PBS with 50% Glycerol, 0.05% Proclin300, 0.5% BSA, pH 7.3.  
**Aliquoting is unnecessary for -20°C storage**

**\*\*\* 20ul sizes contain 0.1% BSA**

For technical support and original validation data for this product please contact:  
T: 1 (888) 4PTGLAB (1-888-478-4522) (toll free in USA), or 1(312) 455-8498 (outside USA)      E: proteintech@ptglab.com  
W: ptglab.com

**This product is exclusively available under Proteintech Group brand and is not available to purchase from any other manufacturer.**

## Selected Validation Data



1X10<sup>6</sup> Jurkat cells were intracellularly stained with 0.8 ug CoraLite® Plus 488 Anti-Human LZTFL1 (CL488-68281, Clone:2C1F6) (red), or 0.8 ug CoraLite® Plus 488 Mouse IgG2a Isotype Control (C1.18.4) (CL488-65208, Clone: C 1.18.4) (blue). Cells were fixed with 4% PFA and permeabilized with Flow Cytometry Perm Buffer (PF00011-C).