

For Research Use Only

CoraLite® Plus 488-conjugated CAP1 Monoclonal antibody



Catalog Number:CL488-68207

Basic Information

Catalog Number: CL488-68207	GenBank Accession Number: BC013963	Purification Method: Protein G purification
Size: 100ul , Concentration: 1000 µg/ml by Nanodrop;	GeneID (NCBI): 10487	CloneNo.: 2H3A10
Source: Mouse	Full Name: CAP, adenylate cyclase-associated protein 1 (yeast)	Recommended Dilutions: IF 1:50-1:500
Isotype: IgG1	Calculated MW: 475 aa, 52 kDa	Excitation/Emission maxima wavelengths: 493 nm / 522 nm
Immunogen Catalog Number: AG8876	Observed MW: 52 kDa	

Applications

Tested Applications: FC (Intra), IF	Positive Controls: IF : HepG2 cells,
Species Specificity: Human, mouse, rat, pig, rabbit	

Background Information

CAP1, also known as CAP, CAP1-PEN, belongs to the CAP family and contains 1 C-CAP/cofactor C-like domain. CAP1 binds to monomeric actin and regulates the actin cytoskeleton to control cell size, adhesion, and migration (PMID: 23737525). CAP1 also functions as a receptor for inflammatory cytokine resistin (PMID: 24606903). CAP1 is an abundant and ubiquitously expressed protein. Western blot analysis detected CAP1 at an apparent molecular mass of 52 kDa.

Storage

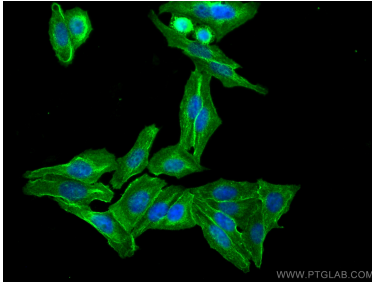
Storage:
Store at -20°C. Avoid exposure to light. Stable for one year after shipment.
Storage Buffer:
PBS with 50% Glycerol, 0.05% Proclin300, 0.5% BSA, pH 7.3.
Aliquoting is unnecessary for -20°C storage

*** 20ul sizes contain 0.1% BSA

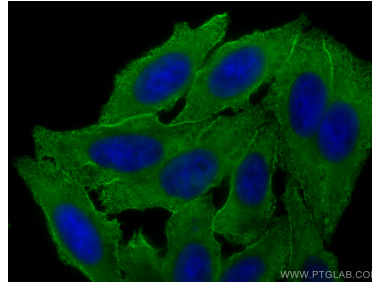
For technical support and original validation data for this product please contact:
T: 1 (888) 4PTGLAB (1-888-478-4522) (toll free in USA), or 1(312) 455-8498 (outside USA) E: proteintech@ptglab.com W: ptglab.com

This product is exclusively available under Proteintech Group brand and is not available to purchase from any other manufacturer.

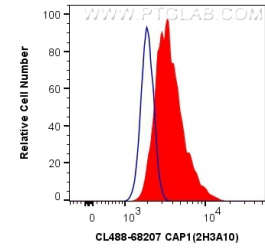
Selected Validation Data



Immunofluorescent analysis of (4% PFA) fixed HepG2 cells using CoraLite® Plus 488 CAP1 antibody (CL488-68207, Clone: 2H3A10) at dilution of 1:200.



Immunofluorescent analysis of (-20°C Ethanol) fixed HepG2 cells using CoraLite® Plus 488 CAP1 antibody (CL488-68207, Clone: 2H3A10) at dilution of 1:200.



1X10⁶ HeLa cells were intracellularly stained with 0.4 ug CoraLite® Plus 488 Anti-Human CAP1 (CL488-68207, Clone:2H3A10) (red), or 0.4 ug Control Antibody. Cells were fixed with 4% PFA and permeabilized with Flow Cytometry Perm Buffer (PF00011-C).