

For Research Use Only

CoraLite® Plus 488-conjugated PSMA4 Monoclonal antibody



Catalog Number:CL488-68203

Basic Information

| | | |
|---|--|---|
| Catalog Number: CL488-68203 | GenBank Accession Number: BC056249 | Purification Method: Protein A purification |
| Size: 100ul , Concentration: 1000 µg/ml by Nanodrop; | GeneID (NCBI): 5685 | CloneNo.: 2E6E4 |
| Source: Mouse | Full Name: proteasome (prosome, macropain) subunit, alpha type, 4 | Recommended Dilutions: IF 1:50-1:500 |
| Isotype: IgG2b | Calculated MW: 237 aa, 27 kDa | Excitation/Emission maxima wavelengths: 493 nm / 522 nm |
| Immunogen Catalog Number: AG32626 | Observed MW: 29 kDa | |

Applications

| | |
|---|---|
| Tested Applications: IF | Positive Controls: IF : HeLa cells, |
| Species Specificity: Human, Pig, Rabbit, Rat, Mouse | |

Background Information

Storage

Storage:
Store at -20°C. Avoid exposure to light. Stable for one year after shipment.
Storage Buffer:
PBS with 50% Glycerol, 0.05% Proclin300, 0.5% BSA, pH 7.3.
Aliquoting is unnecessary for -20°C storage

*** 20ul sizes contain 0.1% BSA

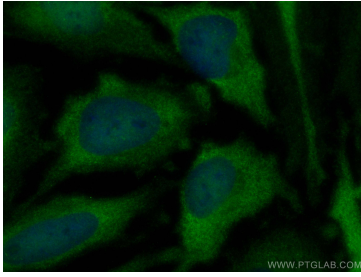
For technical support and original validation data for this product please contact:

T: 1 (888) 4PTGLAB (1-888-478-4522) (toll free
in USA), or 1(312) 455-8498 (outside USA)

E: proteintech@ptglab.com
W: ptglab.com

This product is exclusively available under Proteintech Group brand and is not available to purchase from any other manufacturer.

Selected Validation Data



Immunofluorescent analysis of (-20°C Methanol) fixed HeLa cells using Coralite® Plus 488 PSMA4 antibody (CL488-68203, Clone: 2E6E4) at dilution of 1:100.