

For Research Use Only

CoraLite® Plus 488-conjugated MYL6 Monoclonal antibody



Catalog Number: CL488-68142

Featured Product

Basic Information

Catalog Number: CL488-68142	GenBank Accession Number: BC006781	Purification Method: Protein G purification
Size: 100ul , Concentration: 1000 µg/ml by Nanodrop;	GeneID (NCBI): 4637	CloneNo.: 2G4C9
Source: Mouse	Full Name: myosin, light chain 6, alkali, smooth muscle and non-muscle	Recommended Dilutions: IF 1:250-1:1000
Isotype: IgG1	Calculated MW: 17 kDa	Excitation/Emission maxima wavelengths: 493 nm / 522 nm
Immunogen Catalog Number: AG13091	Observed MW: 17-25 kDa	

Applications

Tested Applications: IF	Positive Controls: IF : HeLa cells,
Species Specificity: Human, mouse, rat, pig, rabbit	

Background Information

Myosin is a hexameric ATPase cellular motor protein. It is composed of two heavy chains, two nonphosphorylatable alkali light chains, and two phosphorylatable regulatory light chains. MYL6 (Myosin light polypeptide 6), encodes a myosin alkali light chain that is expressed in smooth muscle and non-muscle tissues. Expression of MYL6 is high in fibroblasts and myoblasts (PMID:8188229, 2304459, 2722814).

Storage

Storage:
Store at -20°C. Avoid exposure to light. Stable for one year after shipment.
Storage Buffer:
PBS with 50% Glycerol, 0.05% Proclin300, 0.5% BSA, pH 7.3.
Aliquoting is unnecessary for -20°C storage

*** 20ul sizes contain 0.1% BSA

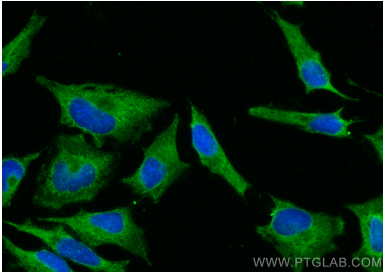
For technical support and original validation data for this product please contact:

T: 1 (888) 4PTGLAB (1-888-478-4522) (toll free
in USA), or 1(312) 455-8498 (outside USA)

E: proteintech@ptglab.com
W: ptglab.com

This product is exclusively available under Proteintech Group brand and is not available to purchase from any other manufacturer.

Selected Validation Data



Immunofluorescent analysis of (-20°C Methanol) fixed HeLa cells using CoraLite® Plus 488 MYL6 antibody (CL488-68142, Clone: 2G4C9) at dilution of 1:500.