

For Research Use Only

CoraLite® Plus 488-conjugated UBE2D1/2/3/4 Monoclonal antibody



Catalog Number:CL488-68138

Basic Information

Catalog Number: CL488-68138	GenBank Accession Number: BC003395	Purification Method: Protein G purification
Size: 100ul , Concentration: 1000 µg/ml by Nanodrop;	GeneID (NCBI): 7323	CloneNo.: 1C7D12
Source: Mouse	Full Name: ubiquitin-conjugating enzyme E2D 3 (UBC4/5 homolog, yeast)	Recommended Dilutions: IF 1:50-1:500
Isotype: IgG1	Calculated MW: 17 kDa	Excitation/Emission maxima wavelengths: 493 nm / 522 nm
Immunogen Catalog Number: AG2278		

Applications

Tested Applications: IF	Positive Controls: IF : A431 cells,
Species Specificity: Human, Mouse, Rat	

Background Information

Ubiquitination is a post-translational modification pathway or is part of the specific protein-degradation pathway by the 26S proteasome. Ubiquitination of a target protein involves multistep enzymatic reaction catalyzed by a cascade of enzymes including Ub-activating enzymes (E1s), Ub-conjugating enzymes (E2s) and Ub ligases (E3s) (PMID: 23542885). UBE2D family, which has 4 members named as UBE2D1/2/3/4, is an E2 ubiquitin-conjugating enzyme family in the ubiquitin-proteasome system. This antibody can recognize all the four members of UBE2D due to the high homology.

Storage

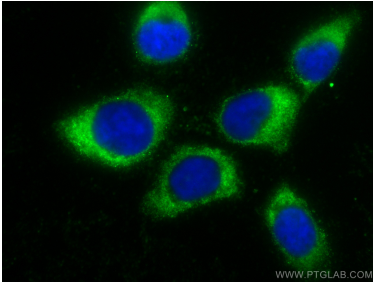
Storage:
Store at -20°C. Avoid exposure to light. Stable for one year after shipment.
Storage Buffer:
PBS with 50% Glycerol, 0.05% Proclin300, 0.5% BSA, pH 7.3.
Aliquoting is unnecessary for -20°C storage

*** 20ul sizes contain 0.1% BSA

For technical support and original validation data for this product please contact:
T: 1 (888) 4PTGLAB (1-888-478-4522) (toll free in USA), or 1(312) 455-8498 (outside USA)
E: proteintech@ptglab.com
W: ptglab.com

This product is exclusively available under Proteintech Group brand and is not available to purchase from any other manufacturer.

Selected Validation Data



Immunofluorescent analysis of (-20°C Methanol) fixed A431 cells using CoraLite® Plus 488 UBE2D1/2/3/4 antibody (CL488-68138, Clone: 1C7D12) at dilution of 1:200.