

For Research Use Only

CoraLite® Plus 488-conjugated PRAME Monoclonal antibody



Catalog Number: CL488-68097

Featured Product

Basic Information

Catalog Number: CL488-68097	GenBank Accession Number: BC014074	Purification Method: Protein A purification
Size: 100ul , Concentration: 1000 µg/ml by Nanodrop;	GeneID (NCBI): 23532	CloneNo.: 1E9G9
Source: Mouse	Full Name: preferentially expressed antigen in melanoma	Recommended Dilutions: IF 1:50-1:500
Isotype: IgG2b	Calculated MW: 509 aa, 58 kDa	Excitation/Emission maxima wavelengths: 493 nm / 522 nm
Immunogen Catalog Number: AG1906	Observed MW: 50 kDa	

Applications

Tested Applications: IF	Positive Controls: IF : HaCaT cells,
Species Specificity: Human, mouse, rat	

Background Information

The PRAME (preferentially expressed antigen of melanoma) gene was previously shown to be overexpressed in ovarian/primary peritoneal serous carcinoma compared with malignant mesothelioma using gene expression arrays. It is considered a melanocyte differentiation antigen which is overexpressed in both solid and hematologic tumors. In normal tissue, a very low level of PRAME expression is found in normal testis, adrenals, ovary and endometrium. A high level of PRAME expression has been reported for several solid tumors, including ovarian cancer, breast cancer, lung cancer and melanomas, medulloblastoma, sarcomas, head and neck cancers, neuroblastoma, renal cancer, and Wilms'tumor. As a nuclear transcriptional repressor protein, PRAME binds to retinoic acid receptor α , thereby inhibiting retinoic acid induced differentiation, growth arrest, and apoptosis.

Storage

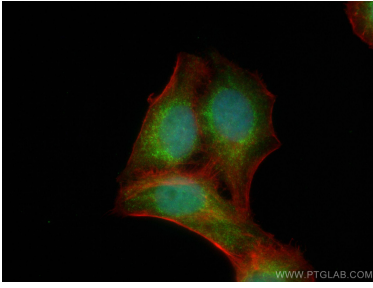
Storage:
Store at -20°C. Avoid exposure to light. Stable for one year after shipment.
Storage Buffer:
PBS with 50% Glycerol, 0.05% Proclin300, 0.5% BSA, pH 7.3.
Aliquoting is unnecessary for -20°C storage

*** 20ul sizes contain 0.1% BSA

For technical support and original validation data for this product please contact:
T: 1 (888) 4PTGLAB (1-888-478-4522) (toll free in USA), or 1(312) 455-8498 (outside USA) E: proteintech@ptglab.com W: ptglab.com

This product is exclusively available under Proteintech Group brand and is not available to purchase from any other manufacturer.

Selected Validation Data



Immunofluorescent analysis of (4% PFA) fixed HaCaT cells using CoraLite® Plus 488 PRAME antibody (CL488-68097, Clone: 1E9G9) at dilution of 1:100, CL594-phalloidin (red).