

For Research Use Only

CoraLite® Plus 488-conjugated DPEP1 Monoclonal antibody



Catalog Number: **CL488-68081**

Basic Information

Catalog Number: CL488-68081	GenBank Accession Number: BC017023	Purification Method: Protein A purification
Size: 100ul , Concentration: 1000 µg/ml by Nanodrop;	GeneID (NCBI): 1800	CloneNo.: 2B4F4
Source: Mouse	Full Name: dipeptidase 1 (renal)	Recommended Dilutions: IF 1:50-1:500
Isotype: IgG2a	Calculated MW: 411 aa, 46 kDa	Excitation/Emission maxima wavelengths: 488 nm / 515 nm
Immunogen Catalog Number: AG14591	Observed MW: 46 kDa	

Applications

Tested Applications: IF	Positive Controls: IF : mouse kidney tissue,
Species Specificity: Human, Mouse, Rat, Pig	

Background Information

Storage

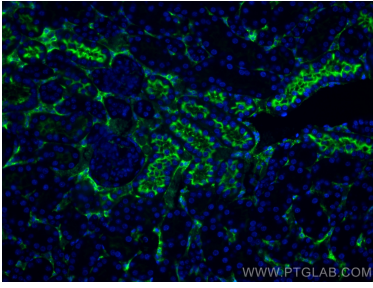
Storage:
Store at -20°C. Avoid exposure to light. Stable for one year after shipment.
Storage Buffer:
PBS with 50% Glycerol, 0.05% Proclin300, 0.5% BSA, pH 7.3.
Aliquoting is unnecessary for -20°C storage

***** 20ul sizes contain 0.1% BSA**

For technical support and original validation data for this product please contact:
T: 1 (888) 4PTGLAB (1-888-478-4522) (toll free in USA), or 1(312) 455-8498 (outside USA)
E: proteintech@ptglab.com
W: ptglab.com

This product is exclusively available under Proteintech Group brand and is not available to purchase from any other manufacturer.

Selected Validation Data



Immunofluorescent analysis of (4% PFA) fixed mouse kidney tissue using Coralite® Plus 488 DPEP1 antibody (CL488-68081, Clone: 2B4F4) at dilution of 1:200.