

For Research Use Only

# CoraLite® Plus 488-conjugated TBC1D4 Monoclonal antibody



Catalog Number: CL488-68063

## Basic Information

|   |   |   |
|---|---|---|
| <b>Catalog Number:</b><br>CL488-68063                             | <b>GenBank Accession Number:</b><br>BC151239      | <b>Purification Method:</b><br>Protein G purification |
| <b>Size:</b><br>100ul , Concentration: 1000 µg/ml by<br>Nanodrop; | <b>GeneID (NCBI):</b><br>9882                     | <b>CloneNo.:</b><br>1E2H2                             |
| <b>Source:</b><br>Mouse   | <b>Full Name:</b><br>TBC1 domain family, member 4 | <b>Recommended Dilutions:</b><br>IF 1:250-1:1000      |
| <b>Isotype:</b><br>IgG1   | <b>Calculated MW:</b><br>1299 aa, 147 kDa         |   |
| <b>Immunogen Catalog Number:</b><br>AG20341                       | <b>Observed MW:</b><br>160 kDa                    |   |

## Applications

|                                      |   |
|--------------------------------------|---|
| <b>Tested Applications:</b><br>IF    | <b>Positive Controls:</b><br>IF : HeLa cells, |
| <b>Species Specificity:</b><br>Human |   |

## Background Information

TBC1D4, also named as AS160, KIAA0603, may act as a GTPase-activating protein for RAB2A, RAB8A, RAB10 and RAB14. Isoform 2 promotes insulin-induced glucose transporter SLC2A4/GLUT4 translocation at the plasma membrane, thus increasing glucose uptake.

## Storage

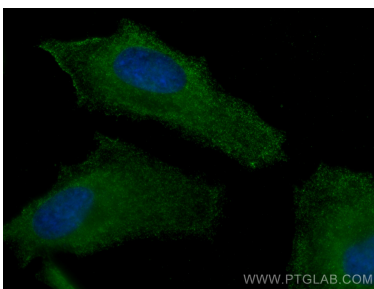
**Storage:**  
Store at -20°C. Avoid exposure to light. Stable for one year after shipment.  
**Storage Buffer:**  
PBS with 50% Glycerol, 0.05% Proclin300, 0.5% BSA, pH 7.3.  
Aliquoting is unnecessary for -20°C storage

\*\*\* 20ul sizes contain 0.1% BSA

For technical support and original validation data for this product please contact:  
T: 1 (888) 4PTGLAB (1-888-478-4522) (toll free in USA), or 1(312) 455-8498 (outside USA)      E: proteintech@ptglab.com  
W: ptglab.com

This product is exclusively available under Proteintech Group brand and is not available to purchase from any other manufacturer.

## Selected Validation Data



Immunofluorescent analysis of (-20°C Methanol) fixed HeLa cells using CoraLite® Plus 488 TBC1D4 antibody (CL488-68063, Clone: 1E2H2) at dilution of 1:500.