

For Research Use Only

CoraLite® Plus 488-conjugated RFX1 Monoclonal antibody



Catalog Number: CL488-68057

Basic Information

Catalog Number: CL488-68057	GenBank Accession Number: BC049826	Purification Method: Protein G purification
Size: 100ul , Concentration: 1000 µg/ml by Nanodrop;	GeneID (NCBI): 5989	CloneNo.: 1G10H6
Source: Mouse	Full Name: regulatory factor X, 1 (influences HLA class II expression)	Excitation/Emission maxima wavelengths: 488 nm / 515 nm
Isotype: IgG1	Calculated MW: 105 kDa	
Immunogen Catalog Number: AG25442	Observed MW: 135 kDa	

Applications

Tested Applications:
FC (Intra)

Species Specificity:
Human, Mouse

Background Information

RFX1, also named as MHC class II regulatory factor RFX1, is a 979 amino acid protein which contains 1 RFX-type winged-helix DNA-binding domain and belongs to the RFX family. RFX1 can binds DNA as a homodimer and heterodimerizes with RFX2 and RFX3. RFX1 as a regulatory factor is essential for MHC class II genes expression. RFX1 protein is modified after translation and its molecular weight could be migrate to 130-140 kDa (PMID: 20189986).

Storage

Storage:
Store at -20°C. Avoid exposure to light. Stable for one year after shipment.

Storage Buffer:
PBS with 50% Glycerol, 0.05% Proclin300, 0.5% BSA, pH 7.3.

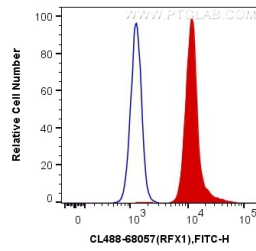
Aliquoting is unnecessary for -20°C storage

*** 20ul sizes contain 0.1% BSA

For technical support and original validation data for this product please contact:
T: 1 (888) 4PTGLAB (1-888-478-4522) (toll free in USA), or 1(312) 455-8498 (outside USA)
E: proteintech@ptglab.com
W: ptglab.com

This product is exclusively available under Proteintech Group brand and is not available to purchase from any other manufacturer.

Selected Validation Data



1X10⁶ Jurkat cells were intracellularly stained with 0.4 ug CoraLite® Plus 488 Anti-Human RFX1 (CL488-68057, Clone:1G10H6) (red), or 0.4 ug x. Cells were fixed and permeabilized with True-Nuclear Transcription Factor Buffer Set.