

For Research Use Only

CoraLite® Plus 488-conjugated DUSP22 Monoclonal antibody



Catalog Number:CL488-68032

Basic Information

| | | |
|---|--|---|
| Catalog Number: CL488-68032 | GenBank Accession Number: BC022847 | Purification Method: Protein A purification |
| Size: 100ul , Concentration: 1000 µg/ml by Nanodrop; | GeneID (NCBI): 56940 | CloneNo.: 3B8F1 |
| Source: Mouse | Full Name: dual specificity phosphatase 22 | Recommended Dilutions: IF 1:50-1:500 |
| Isotype: IgG2a | Calculated MW: 184 aa, 21 kDa | Excitation/Emission maxima wavelengths: 493 nm / 522 nm |
| Immunogen Catalog Number: AG9831 | Observed MW: 21 kDa | |

Applications

| | |
|--|--|
| Tested Applications: IF | Positive Controls: IF : NIH/3T3 cells, |
| Species Specificity: Human, Mouse, Rat, Rabbit | |

Background Information

DUSP22(Dual specificity protein phosphatase 22) is also named as JSP1, LMWDSP2, MKPX. It has been demonstrated to belong to a new subgroup of small DSPs anchored at the membranes by an N-terminal myristic acid moiety and DUSP22 play a regulatory role in the JNK or p38 MAPK pathways(PMID:17384676). It has 2 isoforms produced by alternative splicing with the molecular weight of 21 kDa and 23 kDa.

Storage

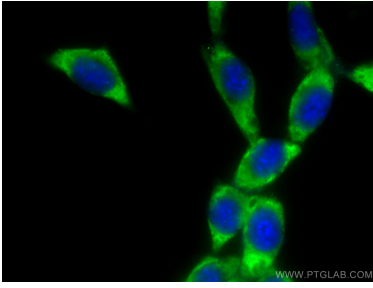
Storage:
Store at -20°C. Avoid exposure to light. Stable for one year after shipment.
Storage Buffer:
PBS with 50% Glycerol, 0.05% Proclin300, 0.5% BSA, pH 7.3.
Aliquoting is unnecessary for -20°C storage

*** 20ul sizes contain 0.1% BSA

For technical support and original validation data for this product please contact:
T: 1 (888) 4PTGLAB (1-888-478-4522) (toll free in USA), or 1(312) 455-8498 (outside USA) E: proteintech@ptglab.com W: ptglab.com

This product is exclusively available under Proteintech Group brand and is not available to purchase from any other manufacturer.

Selected Validation Data



Immunofluorescent analysis of (-20°C Methanol) fixed NIH/3T3 cells using CoraLite® Plus 488 DUSP22 antibody (CL488-68032, Clone: 3B8F1) at dilution of 1:100.