

For Research Use Only

CoraLite® Plus 488-conjugated SLC39A3 Monoclonal antibody



Catalog Number:CL488-68025

Basic Information

Catalog Number: CL488-68025	GenBank Accession Number: BC005869	Purification Method: Protein A purification
Size: 100ul , Concentration: 1000 µg/ml by Nanodrop;	GeneID (NCBI): 29985	CloneNo.: 1A11F6
Source: Mouse	Full Name: solute carrier family 39 (zinc transporter), member 3	Excitation/Emission maxima wavelengths: 488 nm / 515 nm
Isotype: IgG2a	Calculated MW: 314 aa, 34 kDa	
Immunogen Catalog Number: AG14289	Observed MW: 32 kDa	

Applications

Tested Applications:
FC (Intra)

Species Specificity:
Human

Background Information

SLC39A3, also named as ZIP3, belongs to the ZIP transporter (TC 2.A.5) family. SLC39A3 is a Zn importer that acts as a zinc-influx transporter. SLC39A3 is highly expressed in a cell-type-specific manner in ovaries, testes, and the developing nervous system with limited expression in the small intestinal crypt cells, kidney glomerulus, and discrete regions of the liver. SLC39A3 is also expressed in highly specialized, hormonally responsive secretory tissues, such as the pancreas, prostate, and mammary gland (PMID: 19458277). SLC39A3 has 2 isoforms with the molecular mass of 11 and 34 kDa.

Storage

Storage:
Store at -20°C. Avoid exposure to light. Stable for one year after shipment.

Storage Buffer:
PBS with 50% Glycerol, 0.05% Proclin300, 0.5% BSA, pH 7.3.

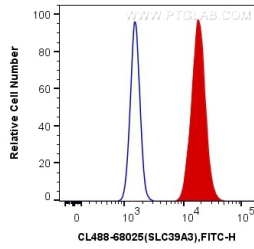
Aliquoting is unnecessary for -20°C storage

*** 20ul sizes contain 0.1% BSA

For technical support and original validation data for this product please contact:
T: 1 (888) 4PTGLAB (1-888-478-4522) (toll free in USA), or 1(312) 455-8498 (outside USA) E: proteintech@ptglab.com W: ptglab.com

This product is exclusively available under Proteintech Group brand and is not available to purchase from any other manufacturer.

Selected Validation Data



1X10⁶ A431 cells were intracellularly stained with 0.4 ug CoraLite® Plus 488 Anti-Human SLC39A3 (CL488-68025, Clone:1A11F6) (red), or 0.4 ug Mouse IgG2a Isotype Control (CL488-66360-2, Clone: K11A1B2A2) (blue). Cells were fixed with 4% PFA and permeabilized with Flow Cytometry Perm Buffer (PF00011-C).