

For Research Use Only

# CoraLite® Plus 488-conjugated SLC30A2 Monoclonal antibody



Catalog Number: CL488-67993

## Basic Information

<b>Catalog Number:</b> CL488-67993	<b>GenBank Accession Number:</b> BC006251	<b>Purification Method:</b> Protein G purification
<b>Size:</b> 100ul , Concentration: 1000 µg/ml by Nanodrop;	<b>GeneID (NCBI):</b> 7780	<b>CloneNo.:</b> 1D9E5
<b>Source:</b> Mouse	<b>Full Name:</b> solute carrier family 30 (zinc transporter), member 2	<b>Excitation/Emission maxima wavelengths:</b> 493 nm / 522 nm
<b>Isotype:</b> IgG1	<b>Calculated MW:</b> 323 aa, 35 kDa	
<b>Immunogen Catalog Number:</b> AG8232	<b>Observed MW:</b> 41 kDa	

## Applications

**Tested Applications:**  
FC (Intra)

**Species Specificity:**  
Human, Mouse

## Background Information

SLC30A2, also named as the Zn transporter 2 gene (ZnT2), belongs to the cation diffusion facilitator (CDF) transporter (TC 2.A.4) family and SLC30A subfamily. It plays a role in the zinc ion transmembrane transport. Expression of SLC30A2 is restricted to secretory cells, such as acinar pancreatic cells, prostate epithelial cells, placental trophoblasts, Paneth cells, and mammary epithelial cells (MECs). SLC30A2 consists of six transmembrane domains with cytoplasmic N- and C-termini that contain numerous regulatory domains, and functions as a homo- or hetero- dimer to transport Zn into vesicles (PMID: 29476070 ). SLC30A2 has 2 isoforms with the molecular mass of 35 and 41 kDa.

## Storage

**Storage:**  
Store at -20°C. Avoid exposure to light. Stable for one year after shipment.

**Storage Buffer:**  
PBS with 50% Glycerol, 0.05% Proclin300, 0.5% BSA, pH 7.3.

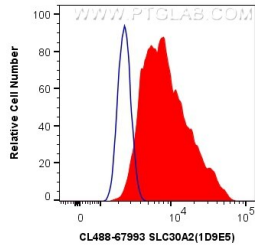
Aliquoting is unnecessary for -20°C storage

\*\*\* 20ul sizes contain 0.1% BSA

For technical support and original validation data for this product please contact:  
T: 1 (888) 4PTGLAB (1-888-478-4522) (toll free in USA), or 1(312) 455-8498 (outside USA) E: proteintech@ptglab.com W: ptglab.com

This product is exclusively available under Proteintech Group brand and is not available to purchase from any other manufacturer.

## Selected Validation Data



1X10<sup>6</sup> HeLa cells were intracellularly stained with 0.4 ug Coralite® Plus 488 Anti-Human SLC30A2 (CL488-67993, Clone:1D9E5) (red), or 0.4 ug Control Antibody. Cells were fixed with 4% PFA and permeabilized with Flow Cytometry Perm Buffer (PF00011-C).