

For Research Use Only

CoraLite® Plus 488-conjugated MON1B Monoclonal antibody



Catalog Number: CL488-67985

Featured Product

Basic Information

Catalog Number: CL488-67985	GenBank Accession Number: BC024277	Purification Method: Protein A purification
Size: 100ul , Concentration: 1000 µg/ml by Nanodrop;	GeneID (NCBI): 22879	CloneNo.: 3E7C6
Source: Mouse	Full Name: MON1 homolog B (yeast)	Recommended Dilutions: IF 1:50-1:500
Isotype: IgG2b	Calculated MW: 547 aa, 59 kDa	
Immunogen Catalog Number: AG9920	Observed MW: 59 kDa	

Applications

Tested Applications: IF	Positive Controls: IF : HeLa cells,
Species Specificity: Human	

Background Information

Storage

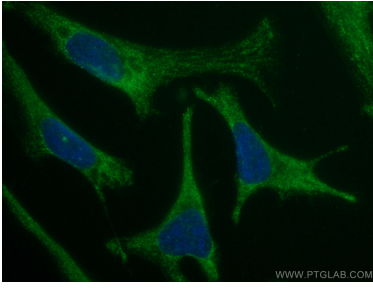
Storage:
Store at -20°C. Avoid exposure to light. Stable for one year after shipment.
Storage Buffer:
PBS with 50% Glycerol, 0.05% Proclin300, 0.5% BSA, pH 7.3.
Aliquoting is unnecessary for -20°C storage

*** 20ul sizes contain 0.1% BSA

For technical support and original validation data for this product please contact:
T: 1 (888) 4PTGLAB (1-888-478-4522) (toll free in USA), or 1(312) 455-8498 (outside USA)
E: proteintech@ptglab.com
W: ptglab.com

This product is exclusively available under Proteintech Group brand and is not available to purchase from any other manufacturer.

Selected Validation Data



Immunofluorescent analysis of (-20°C Ethanol) fixed HeLa cells using CoraLite® Plus 488 MON1B antibody (CL488-67985, Clone: 3E7C6) at dilution of 1:200.