

For Research Use Only

CoraLite® Plus 488-conjugated TEX14 Monoclonal antibody



Catalog Number:CL488-67982

Basic Information

Catalog Number: CL488-67982	GenBank Accession Number: BC040526	Purification Method: Protein A purification
Size: 100ul , Concentration: 1000 µg/ml by Nanodrop;	GeneID (NCBI): 56155	CloneNo.: 1A11D6
Source: Mouse	Full Name: testis expressed 14	Recommended Dilutions: IF 1:50-1:500
Isotype: IgG2a	Calculated MW: 957aa,107 kDa; 1497aa,168 kDa	Excitation/Emission maxima wavelengths: 488 nm / 515 nm
Immunogen Catalog Number: AG13143	Observed MW: 180 kDa	

Applications

Tested Applications: IF	Positive Controls: IF : mouse testis tissue,
Species Specificity: Human, mouse, rat, rabbit	

Background Information

Tex14 is required both for the formation of intercellular bridges during meiosis and for kinetochore-microtubule attachment during mitosis. Intercellular bridges are evolutionarily conserved structures that connect differentiating germ cells and are required for spermatogenesis and male fertility. Tex14 acts by promoting the conversion of midbodies into intercellular bridges via its interaction with CEP55: interaction with CEP55 inhibits the interaction between CEP55 and PDCD6IP/ALIX and TSG101, blocking cell abscission and leading to transform midbodies into intercellular bridges. Tex14 also plays a role during mitosis: recruited to kinetochores by PLK1 during early mitosis and regulates the maturation of the outer kinetochores and microtubule attachment.

Storage

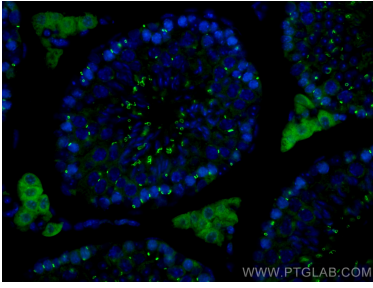
Storage:
Store at -20°C. Avoid exposure to light.
Storage Buffer:
PBS with 50% Glycerol, 0.05% Proclin300, 0.5% BSA, pH 7.3.
Aliquoting is unnecessary for -20°C storage

*** 20ul sizes contain 0.1% BSA

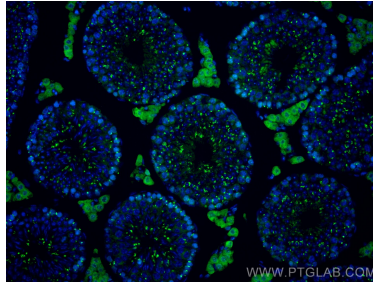
For technical support and original validation data for this product please contact:
T: 1 (888) 4PTGLAB (1-888-478-4522) (toll free in USA), or 1(312) 455-8498 (outside USA)
E: proteintech@ptglab.com
W: ptglab.com

This product is exclusively available under Proteintech Group brand and is not available to purchase from any other manufacturer.

Selected Validation Data



Immunofluorescent analysis of (4% PFA) fixed mouse testis tissue using CoraLite® Plus 488 TEX14 antibody (CL488-67982, Clone: 1A11D6) at dilution of 1:200.



Immunofluorescent analysis of (4% PFA) fixed mouse testis tissue using CoraLite® Plus 488 TEX14 antibody (CL488-67982, Clone: 1A11D6) at dilution of 1:200.