

For Research Use Only

CoraLite® Plus 488-conjugated SLC36A3 Monoclonal antibody



Catalog Number: CL488-67929

Basic Information

Catalog Number:

CL488-67929

Size:

100ul, Concentration: 1000 µg/ml by
Nanodrop;

Source:

Mouse

Isotype:

IgG1

Immunogen Catalog Number:

AG16556

GenBank Accession Number:

BC101092

GeneID (NCBI):

285641

UNIPROT ID:

Q495N2

Full Name:

solute carrier family 36
(proton/amino acid symporter),
member 3

Calculated MW:

511 aa, 56 kDa

Observed MW:

51 kDa

Purification Method:

Protein G purification

CloneNo.:

1A8E6

Recommended Dilutions:

IF 1:50-1:500

Excitation/Emission maxima
wavelengths:

493 nm / 522 nm

Applications

Tested Applications:

IF, FC (Intra)

Species Specificity:

Human, Mouse

Positive Controls:

IF : mouse testis tissue,

Storage

Storage:

Store at -20°C. Avoid exposure to light. Stable for one year after shipment.

Storage Buffer:

PBS with 50% Glycerol, 0.05% Proclin300, 0.5% BSA, pH 7.3.

Aliquoting is unnecessary for -20°C storage

*** 20ul sizes contain 0.1% BSA

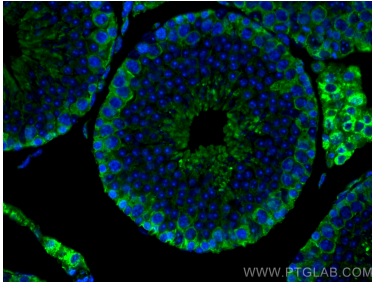
For technical support and original validation data for this product please contact:

T: 1 (888) 4PTGLAB (1-888-478-4522) (toll free
in USA), or 1(312) 455-8498 (outside USA)

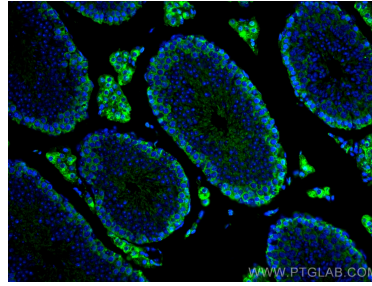
E: proteintech@ptglab.com
W: ptglab.com

This product is exclusively available under Proteintech Group brand and is not available to purchase from any other manufacturer.

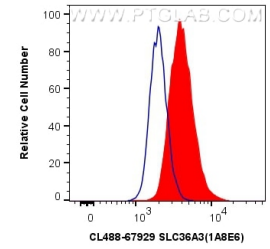
Selected Validation Data



Immunofluorescent analysis of (4% PFA) fixed mouse testis tissue using CoraLite® Plus 488 SLC36A3 antibody (CL488-67929, Clone: 1A8E6) at dilution of 1:200.



Immunofluorescent analysis of (4% PFA) fixed mouse testis tissue using CoraLite® Plus 488 SLC36A3 antibody (CL488-67929, Clone: 1A8E6) at dilution of 1:200.



1X10⁶ PC-3 cells were intracellularly stained with 0.4 ug CoraLite® Plus 488 Anti-Human SLC36A3 (CL488-67929, Clone:1A8E6) (red), or 0.4 ug Control Antibody. Cells were fixed with 4% PFA and permeabilized with Flow Cytometry Perm Buffer (PF00011-C).