

For Research Use Only

CoraLite® Plus 488-conjugated PSME1 Monoclonal antibody



Catalog Number:CL488-67928

Basic Information

| | | |
|---|--|---|
| Catalog Number: CL488-67928 | GenBank Accession Number: BC007503 | Purification Method: Protein G purification |
| Size: 100ul , Concentration: 1000 µg/ml by Nanodrop; | GeneID (NCBI): 5720 | CloneNo.: 1F7E2 |
| Source: Mouse | Full Name: proteasome (prosome, macropain) activator subunit 1 (PA28 alpha) | Excitation/Emission maxima wavelengths: 488 nm / 515 nm |
| Isotype: IgG1 | Calculated MW: 29 kDa | |
| Immunogen Catalog Number: AG30549 | Observed MW: 29 kDa | |

Applications

Tested Applications:
FC (Intra)

Species Specificity:
Human, mouse

Background Information

The principal function of the proteasome is targeted degradation of intracellular proteins. Activity of the 20S proteasome is controlled by regulatory complexes that bind to the ends of the cylindrical proteasome. 11S regulator (REG or PA28), is a complex of 28 kDa subunits that is thought to activate proteasomes toward the production of antigenic peptides. Human PSME1 and PSME2 genes encode the two proteasome activators PA28 alpha and beta, respectively, which have been implicated in antigen processing for loading class I MHC molecules. The PA28 activator complex enhances the generation of class I binding peptides by altering the cleavage pattern of the proteasome.

Storage

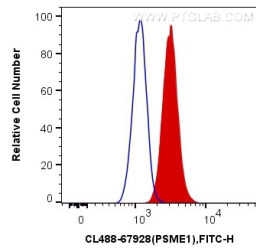
Storage:
Store at -20°C. Avoid exposure to light. Stable for one year after shipment.
Storage Buffer:
PBS with 50% Glycerol, 0.05% Proclin300, 0.5% BSA, pH 7.3.
Aliquoting is unnecessary for -20°C storage

*** 20ul sizes contain 0.1% BSA

For technical support and original validation data for this product please contact:
T: 1 (888) 4PTGLAB (1-888-478-4522) (toll free in USA), or 1(312) 455-8498 (outside USA)
E: proteintech@ptglab.com
W: ptglab.com

This product is exclusively available under Proteintech Group brand and is not available to purchase from any other manufacturer.

Selected Validation Data



1X10⁶ HepG2 cells were intracellularly stained with 0.4 ug CoraLite® Plus 488 Anti-Human PSME1 (CL488-67928, Clone:1F7E2) (red), or 0.4 ug Control Antibody. Cells were fixed with 4% PFA and permeabilized with Flow Cytometry Perm Buffer (PF00011-C).