

For Research Use Only

CoraLite® Plus 488-conjugated MRPS25 Monoclonal antibody



Catalog Number:CL488-67903

Basic Information

Catalog Number: CL488-67903	GenBank Accession Number: BC003590	Purification Method: Protein A purification
Size: 100ul , Concentration: 1000 µg/ml by Nanodrop;	GeneID (NCBI): 64432	CloneNo.: 3B10B6
Source: Mouse	Full Name: mitochondrial ribosomal protein S25	Excitation/Emission maxima wavelengths: 488 nm / 515 nm
Isotype: IgG2b	Calculated MW: 20 kDa	
Immunogen Catalog Number: AG7846	Observed MW: 20 kDa	

Applications

Tested Applications:
FC (Intra)

Species Specificity:
Human, mouse, rat

Background Information

Mitochondrial ribosomal protein S25 (MRPS25) belongs to the ribosomal protein S25/L51 family. It is a component of the mitochondrial ribosome small subunit (28S). The variant segregated with the disease and substitutes a highly conserved proline residue with leucine (p.P72L) that, based on the high-resolution structure of the 28S ribosome, is predicted to compromise inter-protein contacts and destabilize the small subunit.

Storage

Storage:
Store at -20°C. Avoid exposure to light. Stable for one year after shipment.

Storage Buffer:
PBS with 50% Glycerol, 0.05% Proclin300, 0.5% BSA, pH 7.3.

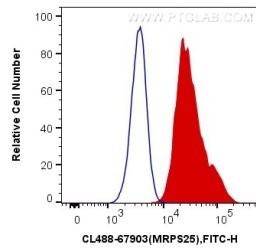
Aliquoting is unnecessary for -20°C storage

*** 20ul sizes contain 0.1% BSA

For technical support and original validation data for this product please contact:
T: 1 (888) 4PTGLAB (1-888-478-4522) (toll free in USA), or 1(312) 455-8498 (outside USA) E: proteintech@ptglab.com W: ptglab.com

This product is exclusively available under Proteintech Group brand and is not available to purchase from any other manufacturer.

Selected Validation Data



1X10⁶ HeLa cells were intracellularly stained with 0.4 ug CoraLite® Plus 488 Anti-Human MRPS25 (CL488-67903, Clone:3B10B6) (red), or 0.4 ug Mouse IgG2b Isotype Control (CL488-66360-3, Clone: K11B8C4B5) (blue). Cells were fixed with 4% PFA and permeabilized with Flow Cytometry Perm Buffer (PF00011-C).