

For Research Use Only

CoraLite® Plus 488-conjugated Importin Alpha 5 Monoclonal antibody



Catalog Number: **CL488-67897**

Basic Information

Catalog Number: CL488-67897	GenBank Accession Number: BC002374	Purification Method: Protein A purification
Size: 100ul , Concentration: 1000 µg/ml by Nanodrop;	GeneID (NCBI): 3836	CloneNo.: 2A7G7
Source: Mouse	Full Name: karyopherin alpha 1 (importin alpha 5)	Excitation/Emission maxima wavelengths: 493 nm / 522 nm
Isotype: IgG2a	Calculated MW: 60 kDa	
Immunogen Catalog Number: AG12751	Observed MW: 60-62 kDa	

Applications

Tested Applications:
FC (Intra)

Species Specificity:
Human, mouse, rat

Background Information

Importins (alpha and beta) are transport factors that transport proteins into the nucleus. alpha importins function by binding transcription factors at nuclear localization sequences (NLS), and associating with importin beta subunits to translocate through the nuclear pore. Six isoforms of alpha importins have been described in human. Importin alpha 5 is the predominant importin in adult CNS and is essential for differentiation and viability of neural cells.

Storage

Storage:
Store at -20°C. Avoid exposure to light. Stable for one year after shipment.

Storage Buffer:
PBS with 50% Glycerol, 0.05% Proclin300, 0.5% BSA, pH 7.3.

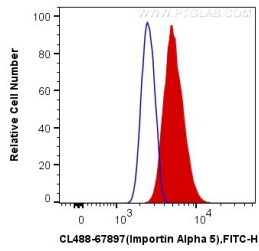
Aliquoting is unnecessary for -20°C storage

***** 20ul sizes contain 0.1% BSA**

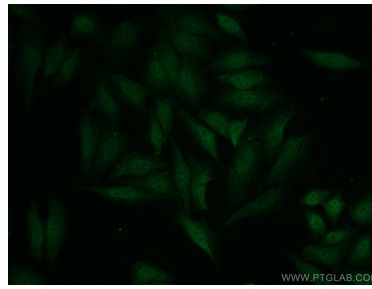
For technical support and original validation data for this product please contact:
T: 1 (888) 4PTGLAB (1-888-478-4522) (toll free in USA), or 1(312) 455-8498 (outside USA) E: proteintech@ptglab.com W: ptglab.com

This product is exclusively available under Proteintech Group brand and is not available to purchase from any other manufacturer.

Selected Validation Data



1X10⁶ MCF-7 cells were intracellularly stained with 0.4 ug CoraLite® Plus 488 Anti-Human Importin Alpha 5 (CL488-67897, Clone:2A7G7) (red), or 0.4 ug Mouse IgG2a Isotype Control (CL488-66360-2, Clone: K11A1B2A2) (blue). Cells were fixed and permeabilized with Transcription Factor Staining Buffer Kit (PF00011).



Immunofluorescent analysis of (4% PFA) fixed HepG2 cells using CoraLite® Plus 488 Importin Alpha 5 antibody (CL488-67897, Clone: 2A7G7) at dilution of 1:200.