

For Research Use Only

CoraLite® Plus 488-conjugated CBFB Monoclonal antibody



Catalog Number: CL488-67885

Basic Information

Catalog Number: CL488-67885	GenBank Accession Number: BC018509	Purification Method: Protein G purification
Size: 100ul , Concentration: 1000 µg/ml by Nanodrop;	GeneID (NCBI): 865	CloneNo.: 1D7F2
Source: Mouse	Full Name: core-binding factor, beta subunit	Excitation/Emission maxima wavelengths: 488 nm / 515 nm
Isotype: IgG1	Calculated MW: 182 aa, 22 kDa	
Immunogen Catalog Number: AG31183		

Applications

Tested Applications:
FC (Intra)

Species Specificity:
Human

Background Information

CBFB (core binding factor subunit β), forms the heterodimeric complex core-binding factor (CBF). As a critical transcription factor, CBFB is frequently mutated in breast cancer and considered to be of significance in the pathogenesis of cancer. (PMID: 29932212) The heterodimers bind to the core site of a number of enhancers and promoters, including murine leukemia virus, polyomavirus enhancer, T-cell receptor enhancers, LCK, IL3 and GM-CSF promoters.) It has calculated molecular weight around 22kDa.

Storage

Storage:
Store at -20°C. Avoid exposure to light. Stable for one year after shipment.

Storage Buffer:
PBS with 50% Glycerol, 0.05% Proclin300, 0.5% BSA, pH 7.3.

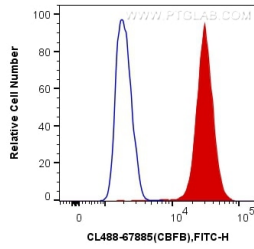
Aliquoting is unnecessary for -20°C storage

*** 20ul sizes contain 0.1% BSA

For technical support and original validation data for this product please contact:
T: 1 (888) 4PTGLAB (1-888-478-4522) (toll free in USA), or 1(312) 455-8498 (outside USA) E: proteintech@ptglab.com W: ptglab.com

This product is exclusively available under Proteintech Group brand and is not available to purchase from any other manufacturer.

Selected Validation Data



1X10⁶ K-562 cells were intracellularly stained with 0.4 ug CoraLite® Plus 488 Anti-Human CBFB (CL488-67885, Clone:1D7F2) (red), or 0.4 ug Control Antibody. Cells were fixed with 4% PFA and permeabilized with Flow Cytometry Perm Buffer (PF00011-C).