

For Research Use Only

CoraLite® Plus 488-conjugated ASH2L Monoclonal antibody



Catalog Number: CL488-67859

Basic Information

Catalog Number: CL488-67859	GenBank Accession Number: BC015936	Purification Method: Protein A purification
Size: 100ul , Concentration: 1000 µg/ml by Nanodrop;	GeneID (NCBI): 9070	CloneNo.: 1G1H3
Source: Mouse	Full Name: ash2 (absent, small, or homeotic)-like (Drosophila)	Excitation/Emission maxima wavelengths: 493 nm / 522 nm
Isotype: IgG2a	Calculated MW: 628 aa, 69 kDa	
Immunogen Catalog Number: AG3008	Observed MW: 80 kDa	

Applications

Tested Applications:
FC (Intra)

Species Specificity:
Human, rat

Background Information

Storage

Storage:
Store at -20°C. Avoid exposure to light. Stable for one year after shipment.
Storage Buffer:
PBS with 50% Glycerol, 0.05% Proclin300, 0.5% BSA, pH 7.3.
Aliquoting is unnecessary for -20°C storage

*** 20ul sizes contain 0.1% BSA

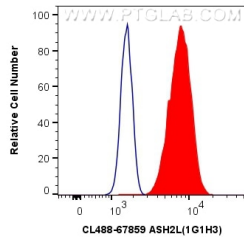
For technical support and original validation data for this product please contact:

T: 1 (888) 4PTGLAB (1-888-478-4522) (toll free
in USA), or 1(312) 455-8498 (outside USA)

E: proteintech@ptglab.com
W: ptglab.com

This product is exclusively available under Proteintech Group brand and is not available to purchase from any other manufacturer.

Selected Validation Data



1X10⁶ HeLa cells were intracellularly stained with 0.8 ug CoraLite® Plus 488 Anti-Human ASH2L (CL488-67859, Clone:1G1H3) (red), or 0.8 ug CoraLite® Plus 488 Mouse IgG2a Isotype Control (C1.18.4) (CL488-65208, Clone: C1.18.4) (blue). Cells were fixed and permeabilized with Transcription Factor Staining Buffer Kit (PF00011).