

For Research Use Only

CoraLite® Plus 488-conjugated GIT2 Monoclonal antibody



Catalog Number: **CL488-67858**

Basic Information

Catalog Number: CL488-67858	GenBank Accession Number: BC001379	Purification Method: Protein G purification
Size: 100ul , Concentration: 1000 µg/ml by Nanodrop;	GeneID (NCBI): 9815	CloneNo.: 2D9C5
Source: Mouse	Full Name: G protein-coupled receptor kinase interacting ArfGAP 2	Excitation/Emission maxima wavelengths: 493 nm / 522 nm
Isotype: IgG1	Calculated MW: 95 kDa	
Immunogen Catalog Number: AG0321	Observed MW: 70-85 kDa	

Applications

Tested Applications:
FC (Intra)

Species Specificity:
Human, rat

Background Information

Storage

Storage:
Store at -20°C. Avoid exposure to light. Stable for one year after shipment.

Storage Buffer:
PBS with 50% Glycerol, 0.05% Proclin300, 0.5% BSA, pH 7.3.

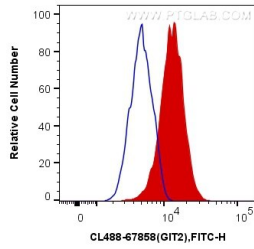
Aliquoting is unnecessary for -20°C storage

*** 20ul sizes contain 0.1% BSA

For technical support and original validation data for this product please contact:
T: 1 (888) 4PTGLAB (1-888-478-4522) (toll free in USA), or 1(312) 455-8498 (outside USA)
E: proteintech@ptglab.com
W: ptglab.com

This product is exclusively available under Proteintech Group brand and is not available to purchase from any other manufacturer.

Selected Validation Data



1X10⁶ HeLa cells were intracellularly stained with 0.4 ug Coralite® Plus 488 Anti-Human GIT2 (CL488-67858, Clone:2D9C5) (red), or 0.4 ug Control Antibody. Cells were fixed with 4% PFA and permeabilized with Flow Cytometry Perm Buffer (PF00011-C).