

For Research Use Only

CoraLite® Plus 488-conjugated RUVBL2 Monoclonal antibody



Catalog Number: CL488-67851

Basic Information

Catalog Number: CL488-67851	GenBank Accession Number: BC000428	Purification Method: Protein A purification
Size: 100ul , Concentration: 1000 µg/ml by Nanodrop;	GeneID (NCBI): 10856	CloneNo.: 1A1A4
Source: Mouse	Full Name: RuvB-like 2 (E. coli)	Recommended Dilutions: IF 1:200-1:800
Isotype: IgG2b	Calculated MW: 51 kDa	Excitation/Emission maxima wavelengths: 493 nm / 522 nm
Immunogen Catalog Number: AG0253	Observed MW: 51 kDa	

Applications

Tested Applications:

FC (Intra), IF

Species Specificity:

Human, mouse, rat

Positive Controls:

IF : HepG2 cells,

Background Information

RUVBL2 belongs to the conserved ATPases associated with various cellular activities (AAA+) protein subfamily, which is characterized by the presence of conserved Walker A and B motifs that are involved in ATP binding and hydrolysis. The AAA+ (ATPases associated with diverse cellular activities) ATPases, RUVBL1 and RUVBL2, were originally isolated as components of transcriptional complexes and shown to function in a number of different cellular processes, including transcriptional regulation, chromatin remodelling and DNA damage responses. (PMID: 31572066, PMID: 31138842)

Storage

Storage:

Store at -20°C. Avoid exposure to light. Stable for one year after shipment.

Storage Buffer:

PBS with 50% Glycerol, 0.05% Proclin300, 0.5% BSA, pH 7.3.

Aliquoting is unnecessary for -20°C storage

*** 20ul sizes contain 0.1% BSA

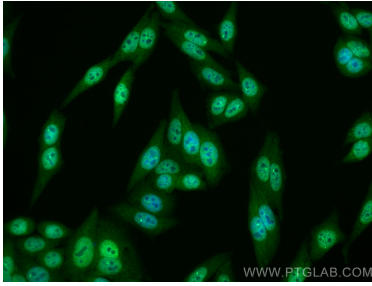
For technical support and original validation data for this product please contact:

T: 1 (888) 4PTGLAB (1-888-478-4522) (toll free
in USA), or 1(312) 455-8498 (outside USA)

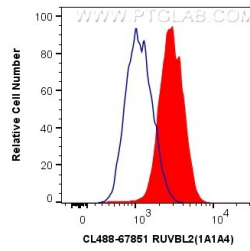
E: proteintech@ptglab.com
W: ptglab.com

This product is exclusively available under Proteintech Group brand and is not available to purchase from any other manufacturer.

Selected Validation Data



Immunofluorescent analysis of (4% PFA) fixed HepG2 cells using CoraLite® Plus 488 RUVBL2 antibody (CL488-67851, Clone: 1A1A4) at dilution of 1:200.



1X10⁶ HL-60 cells were intracellularly stained with 0.4 ug CoraLite® Plus 488 Anti-Human RUVBL2 (CL488-67851, Clone:1A1A4) (red), or 0.4 ug Mouse IgG2b Isotype Control (CL488-66360-3, Clone: K11B8C4B5) (blue). Cells were fixed and permeabilized with Transcription Factor Staining Buffer Kit (PF00011).