

For Research Use Only

CoraLite® Plus 488-conjugated OXCT1 Monoclonal antibody



Catalog Number: **CL488-67836**

Basic Information

Catalog Number: CL488-67836	GenBank Accession Number: BC009001	Purification Method: Protein G purification
Size: 100ul , Concentration: 1000 µg/ml by Nanodrop;	GeneID (NCBI): 5019	CloneNo.: 1G1B9
Source: Mouse	Full Name: 3-oxoacid CoA transferase 1	Recommended Dilutions: IF 1:50-1:500
Isotype: IgG1	Calculated MW: 520 aa, 56 kDa	Excitation/Emission maxima wavelengths: 493 nm / 522 nm
Immunogen Catalog Number: AG24792		

Applications

Tested Applications: FC, IF	Positive Controls: IF : HeLa cells,
Species Specificity: Human, mouse, rat, pig, rabbit	

Background Information

OXCT1 (also known as SCOT), encoded by nuclear gene, is a mitochondrial CoA transferase required for ketone body degradation. It catalyzes the transfer of CoA from succinyl-CoA to acetoacetate, generating acetoacetyl-CoA. OXCT1 is expressed in brain, heart, and skeletal muscle, but not in liver. This antibody specifically recognizes endogenous OXCT1. (21209089)

Storage

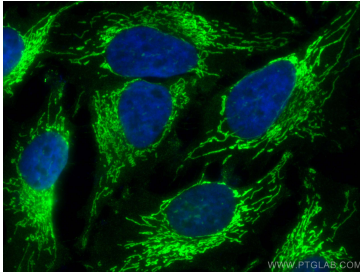
Storage:
Store at -20°C. Avoid exposure to light. Stable for one year after shipment.
Storage Buffer:
PBS with 50% Glycerol, 0.05% Proclin300, 0.5% BSA, pH 7.3.
Aliquoting is unnecessary for -20°C storage

***** 20ul sizes contain 0.1% BSA**

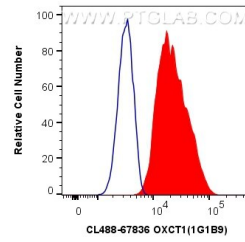
For technical support and original validation data for this product please contact:
T: 1 (888) 4PTGLAB (1-888-478-4522) (toll free in USA), or 1(312) 455-8498 (outside USA)
E: proteintech@ptglab.com
W: ptglab.com

This product is exclusively available under Proteintech Group brand and is not available to purchase from any other manufacturer.

Selected Validation Data



Immunofluorescent analysis of (4% PFA) fixed HeLa cells using CoraLite® Plus 488 OXCT1 antibody (CL488-67836, Clone: 1G1B9) at dilution of 1:200.



1X10⁶ HeLa cells were intracellularly stained with 0.4 ug CoraLite® Plus 488 Anti-Human OXCT1 (CL488-67836, Clone:1G1B9) (red), or 0.4 ug CoraLite® Plus 488 Mouse IgG1 Isotype Control (MOPC-21) (CL488-65124, Clone: MOPC-21) (blue). Cells were fixed with 4% PFA and permeabilized with Flow Cytometry Perm Buffer (PF00011-C).