

For Research Use Only

CoraLite® Plus 488-conjugated LMCD1 Monoclonal antibody



Catalog Number: CL488-67834

Basic Information

| | | |
|---|--|---|
| Catalog Number: CL488-67834 | GenBank Accession Number: BC000646 | Purification Method: Protein G purification |
| Size: 100ul , Concentration: 1000 µg/ml by Nanodrop; | GeneID (NCBI): 29995 | CloneNo.: 2A7B3 |
| Source: Mouse | Full Name: LIM and cysteine-rich domains 1 | Recommended Dilutions: IF 1:50-1:500 |
| Isotype: IgG1 | Calculated MW: 41 kDa | Excitation/Emission maxima wavelengths: 493 nm / 522 nm |
| Immunogen Catalog Number: AG28331 | Observed MW: ~40 kDa | |

Applications

| | |
|---|--|
| Tested Applications: FC (Intra), IF | Positive Controls: IF : MCF-7 cells, |
| Species Specificity: Human | |

Background Information

LIM and cysteine-rich domains-1 (LMCD1) is a member of the LIM protein family, which contains an N-terminal cysteine-rich region, two C-terminal LIM domains and a central PET (Prickle, Espinas, and Testin) domain. LMCD1 has been reported in cardiac tissues and lung acting as a transcriptional repressor for GATA6. The mutations of LMCD1 promote cell migration and tumor metastasis in hepatocellular carcinoma. (PMID: 31501411) It has calculated molecular weight around 41kDa.

Storage

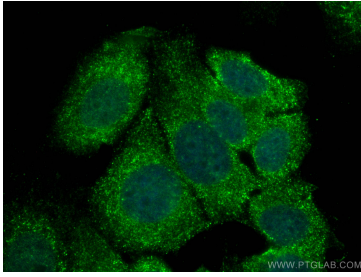
Storage:
Store at -20°C. Avoid exposure to light. Stable for one year after shipment.
Storage Buffer:
PBS with 50% Glycerol, 0.05% Proclin300, 0.5% BSA, pH 7.3.
Aliquoting is unnecessary for -20°C storage

*** 20ul sizes contain 0.1% BSA

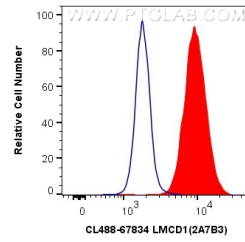
For technical support and original validation data for this product please contact:
T: 1 (888) 4PTGLAB (1-888-478-4522) (toll free in USA), or 1(312) 455-8498 (outside USA)
E: proteintech@ptglab.com
W: ptglab.com

This product is exclusively available under Proteintech Group brand and is not available to purchase from any other manufacturer.

Selected Validation Data



Immunofluorescent analysis of (4% PFA) fixed MCF-7 cells using CoraLite® Plus 488 LMCD1 antibody (CL488-67834, Clone: 2A7B3) at dilution of 1:200.



1X10⁶ MCF-7 cells were intracellularly stained with 0.8 ug CoraLite® Plus 488 Anti-Human LMCD1 (CL488-67834, Clone:2A7B3) (red), or 0.8 ug CoraLite® Plus 488 Mouse IgG1 Isotype Control (MOPC-21) (CL488-65124, Clone: MOPC-21) (blue). Cells were fixed and permeabilized with Transcription Factor Staining Buffer Kit (PF00011).