

For Research Use Only

CoraLite® Plus 488-conjugated RP2 Monoclonal antibody



Catalog Number: **CL488-67795**

Basic Information

Catalog Number: CL488-67795	GenBank Accession Number: BC043348	Purification Method: Protein G purification
Size: 100ul , Concentration: 1000 µg/ml by Nanodrop;	GeneID (NCBI): 6102	CloneNo.: 1G2A9
Source: Mouse	Full Name: retinitis pigmentosa 2 (X-linked recessive)	Excitation/Emission maxima wavelengths: 488 nm / 515 nm
Isotype: IgG1	Calculated MW: 350 aa, 40 kDa	
Immunogen Catalog Number: AG5630	Observed MW: 37-40 kDa	

Applications

Tested Applications:
FC (Intra)

Species Specificity:
Human, rabbit

Background Information

Storage

Storage:
Store at -20°C. Avoid exposure to light. Stable for one year after shipment.

Storage Buffer:
PBS with 50% Glycerol, 0.05% Proclin300, 0.5% BSA, pH 7.3.

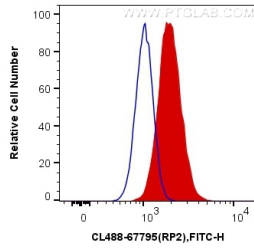
Aliquoting is unnecessary for -20°C storage

***** 20ul sizes contain 0.1% BSA**

For technical support and original validation data for this product please contact:
T: 1 (888) 4PTGLAB (1-888-478-4522) (toll free in USA), or 1(312) 455-8498 (outside USA) E: proteintech@ptglab.com
W: ptglab.com

This product is exclusively available under Proteintech Group brand and is not available to purchase from any other manufacturer.

Selected Validation Data



1X10⁶ HepG2 cells were intracellularly stained with 0.4 ug CoraLite® Plus 488 Anti-Human RP2 (CL488-67795, Clone:1G2A9) (red), or 0.4 ug x. Cells were fixed with 4% PFA and permeabilized with Flow Cytometry Perm Buffer (PF00011-C).