

For Research Use Only

CoraLite® Plus 488-conjugated GOT2 Monoclonal antibody



Catalog Number:CL488-67738

Basic Information

Catalog Number: CL488-67738	GenBank Accession Number: BC000525	Purification Method: Protein G purification
Size: 100ul , Concentration: 1000 µg/ml by Nanodrop;	GeneID (NCBI): 2806	CloneNo.: 1B6C6
Source: Mouse	Full Name: glutamic-oxaloacetic transaminase 2, mitochondrial (aspartate aminotransferase 2)	Excitation/Emission maxima wavelengths: 488 nm / 515 nm
Isotype: IgG1	Calculated MW: 47 kDa	
Immunogen Catalog Number: AG6600	Observed MW: 39-40 kDa	

Applications

Tested Applications:
FC (Intra)

Species Specificity:
Human, mouse, rat, pig, chicken

Background Information

GOT2 encodes the mitochondrial glutamate oxaloacetate transaminase and plays an essential role in the intracellular NAD(H) redox balance. Upregulation of GOT2 has been reported in various cancers, including breast cancer and pancreatic cancer. GOT2 mutation leads to autosomal recessive neurometabolic disorder.

Storage

Storage:
Store at -20°C. Avoid exposure to light. Stable for one year after shipment.

Storage Buffer:
PBS with 50% Glycerol, 0.05% Proclin300, 0.5% BSA, pH 7.3.

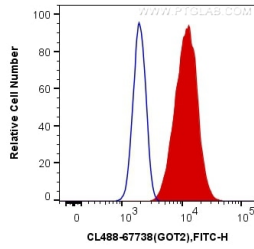
Aliquoting is unnecessary for -20°C storage

*** 20ul sizes contain 0.1% BSA

For technical support and original validation data for this product please contact:
T: 1 (888) 4PTGLAB (1-888-478-4522) (toll free in USA), or 1(312) 455-8498 (outside USA) E: proteintech@ptglab.com W: ptglab.com

This product is exclusively available under Proteintech Group brand and is not available to purchase from any other manufacturer.

Selected Validation Data



1X10⁶ HeLa cells were intracellularly stained with 0.4 ug Coralite® Plus 488 Anti-Human GOT2 (CL488-67738, Clone:1B6C6) (red), or 0.4 ug Control Antibody. Cells were fixed with 4% PFA and permeabilized with Flow Cytometry Perm Buffer (PF00011-C).