

For Research Use Only

# CoraLite® Plus 488-conjugated CREB3L1,OASIS Monoclonal antibody



Catalog Number:CL488-67617

## Basic Information

<b>Catalog Number:</b> CL488-67617	<b>GenBank Accession Number:</b> BC015781	<b>Purification Method:</b> Protein G purification
<b>Size:</b> 100ul , Concentration: 1000 µg/ml by Nanodrop;	<b>GeneID (NCBI):</b> 90993	<b>CloneNo.:</b> 2B5B4
<b>Source:</b> Mouse	<b>Full Name:</b> cAMP responsive element binding protein 3-like 1	<b>Excitation/Emission maxima wavelengths:</b> 488 nm / 515 nm
<b>Isotype:</b> IgG1	<b>Calculated MW:</b> 57 kDa	
<b>Immunogen Catalog Number:</b> AG28042	<b>Observed MW:</b> 58 kDa	

## Applications

**Tested Applications:**  
FC (Intra)

**Species Specificity:**  
Human, mouse, rat

## Background Information

Cyclic AMP-responsive element-binding protein 3-like protein 1(CREB3L1) belongs to a family of transcription factors that are synthesized as membrane-bound precursors in the endoplasmic reticulum (ER) and then transported to the Golgi where they are activated through regulated intramembrane proteolysis (RIP). Also it participates in ER-stress response in astrocytes in the central nervous system. It may has a role in gliosis, and involves in activation of transcription through box-B element but not CRE. CREB3L1 acts as a transcription repressor in proliferation of virus-infected cell. The full-length precursor form (approximately 84 kDa) of CREB3L1 and the matured form of CREB3L1 is 58 kDa. (PMID: 20668028)

## Storage

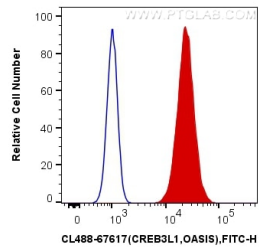
**Storage:**  
Store at -20°C. Avoid exposure to light. Stable for one year after shipment.  
**Storage Buffer:**  
PBS with 50% Glycerol, 0.05% Proclin300, 0.5% BSA, pH 7.3.  
Aliquoting is unnecessary for -20°C storage

\*\*\* 20ul sizes contain 0.1% BSA

For technical support and original validation data for this product please contact:  
T: 1 (888) 4PTGLAB (1-888-478-4522) (toll free in USA), or 1(312) 455-8498 (outside USA) E: proteintech@ptglab.com W: ptglab.com

This product is exclusively available under Proteintech Group brand and is not available to purchase from any other manufacturer.

## Selected Validation Data



1X10<sup>6</sup> HepG2 cells were intracellularly stained with 0.4 ug CoraLite® Plus 488 Anti-Human CREB3L1, OASIS (CL488-67617, Clone:2B5B4) (red), or 0.4 ug x. Cells were fixed with 4% PFA and permeabilized with Flow Cytometry Perm Buffer (PF00011-C).