

For Research Use Only

CoraLite® Plus 488-conjugated RALYL Monoclonal antibody



Catalog Number:CL488-67534

Basic Information

| | | |
|---|--|---|
| Catalog Number: CL488-67534 | GenBank Accession Number: BC031090 | Purification Method: Protein G purification |
| Size: 100ul , Concentration: 1000 µg/ml by Nanodrop; | GeneID (NCBI): 138046 | CloneNo.: 1F3F4 |
| Source: Mouse | Full Name: RALY RNA binding protein-like | Recommended Dilutions: IF 1:50-1:500 |
| Isotype: IgG1 | Calculated MW: 291 aa, 32 kDa | Excitation/Emission maxima wavelengths: 488 nm / 515 nm |
| Immunogen Catalog Number: AG11676 | Observed MW: 35-40 kDa | |

Applications

Tested Applications:

FC (Intra), IF

Species Specificity:

Human, mouse, rat, pig

Positive Controls:

IF : HepG2 cells,

Background Information

RALY RNA binding protein-like (RALYL) belongs to the RALY subfamily. RALYL locates in 8q21.2, the function of which is RNA-binding and nucleotide binding. The RALYL high expression in the normal adrenal, kidney and brain (Shyamsundar et al., 2005). Furthermore, RALYL expression down-regulated correlates with mental disorder (Lee et al., 2007), Parkinson's disease (Moran et al., 2006), brain cancer (Maris et al., 2008), adrenal cancer (Giordano et al., 2009) and kidney cancer (Higgins et al., 2003). The expression of RALYL was significantly low in Clear Cell Renal Cell Carcinoma and correlated with a poor prognosis in a large number of clinical samples. Our findings showed that RALYL may be a potential therapeutic target as well as a poor prognostic

Storage

Storage:

Store at -20°C. Avoid exposure to light. Stable for one year after shipment.

Storage Buffer:

PBS with 50% Glycerol, 0.05% Proclin300, 0.5% BSA, pH 7.3.

Aliquoting is unnecessary for -20°C storage

*** 20ul sizes contain 0.1% BSA

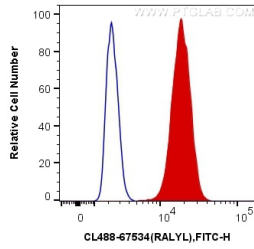
For technical support and original validation data for this product please contact:

T: 1 (888) 4PTGLAB (1-888-478-4522) (toll free
in USA), or 1(312) 455-8498 (outside USA)

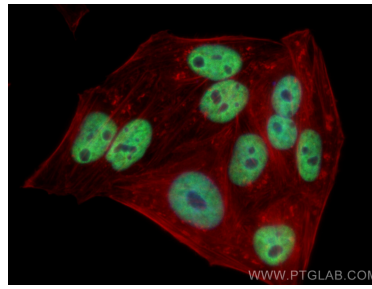
E: proteintech@ptglab.com
W: ptglab.com

This product is exclusively available under Proteintech Group brand and is not available to purchase from any other manufacturer.

Selected Validation Data



1X10⁶ HepG2 cells were intracellularly stained with 0.4 ug CoraLite® Plus 488 Anti-Human RALYL (CL488-67534, Clone:1F3F4) (red), or 0.4 ug Control Antibody. Cells were fixed and permeabilized with Transcription Factor Staining Buffer Kit (PF00011).



Immunofluorescent analysis of (4% PFA) fixed HepG2 cells using CoraLite® Plus 488 RALYL antibody (CL488-67534, Clone: 1F3F4) at dilution of 1:200, CL594-Phalloidin (red).