

For Research Use Only

CoraLite® Plus 488-conjugated MYL4 Monoclonal antibody



Catalog Number:CL488-67533

Basic Information

Catalog Number: CL488-67533	GenBank Accession Number: BC030228	Purification Method: Protein A purification
Size: 100ul , Concentration: 1000 µg/ml by Nanodrop;	GeneID (NCBI): 4635	CloneNo.: 2F5C1
Source: Mouse	Full Name: myosin, light chain 4, alkali; atrial, embryonic	Recommended Dilutions: IF 1:50-1:500
Isotype: IgG2b	Calculated MW: 197 aa, 22 kDa	Excitation/Emission maxima wavelengths: 488 nm / 515 nm
Immunogen Catalog Number: AG19244	Observed MW: 22-25 kDa	

Applications

Tested Applications: IF	Positive Controls: IF : mouse heart tissue,
Species Specificity: Human, mouse, rat, pig	

Background Information

Myosin light-chain 4 (MYL4) encodes an essential myosin light chain that is expressed in embryonic whole heart and skeletal muscle. It is specifically expressed in human atria after birth. MYL4 is essential for atrial electrical, functional, and structural integrity, and MYL4 dysfunction can produce severe inherited atrial cardiomyopathy.

Storage

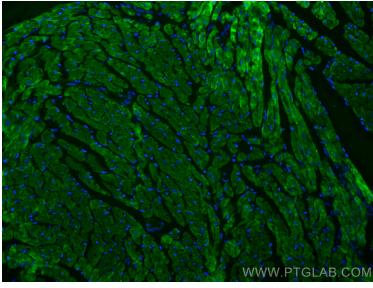
Storage:
Store at -20°C. Avoid exposure to light.
Storage Buffer:
PBS with 50% Glycerol, 0.05% Proclin300, 0.5% BSA, pH 7.3.
Aliquoting is unnecessary for -20°C storage

*** 20ul sizes contain 0.1% BSA

For technical support and original validation data for this product please contact:
T: 1 (888) 4PTGLAB (1-888-478-4522) (toll free in USA), or 1(312) 455-8498 (outside USA) E: proteintech@ptglab.com W: ptglab.com

This product is exclusively available under Proteintech Group brand and is not available to purchase from any other manufacturer.

Selected Validation Data



Immunofluorescent analysis of (4% PFA) fixed mouse heart tissue using CoraLite® Plus 488 MYL4 antibody (CL488-67533, Clone: 2F5C1) at dilution of 1:100.