

For Research Use Only

# CoraLite® Plus 488-conjugated CYP20A1 Monoclonal antibody



Catalog Number: **CL488-67433**

## Basic Information

<b>Catalog Number:</b> CL488-67433	<b>GenBank Accession Number:</b> BC020616	<b>Purification Method:</b> Protein G purification
<b>Size:</b> 100ul , Concentration: 1000 µg/ml by Nanodrop;	<b>GeneID (NCBI):</b> 57404	<b>CloneNo.:</b> 2A9E2
<b>Source:</b> Mouse	<b>Full Name:</b> cytochrome P450, family 20, subfamily A, polypeptide 1	<b>Recommended Dilutions:</b> IF 1:200-1:800
<b>Isotype:</b> IgG1	<b>Calculated MW:</b> 462 aa, 52 kDa	<b>Excitation/Emission maxima wavelengths:</b> 493 nm / 522 nm
<b>Immunogen Catalog Number:</b> AG9715	<b>Observed MW:</b> 49-52 kDa	

## Applications

<b>Tested Applications:</b> IF	<b>Positive Controls:</b> IF : HeLa cells,
<b>Species Specificity:</b> Human, Mouse, Rat	

## Background Information

### Storage

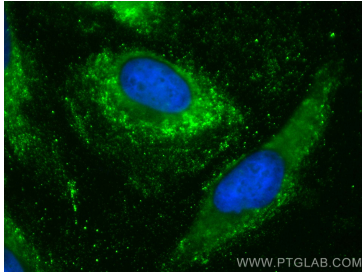
**Storage:**  
Store at -20°C. Avoid exposure to light. Stable for one year after shipment.  
**Storage Buffer:**  
PBS with 50% Glycerol, 0.05% Proclin300, 0.5% BSA, pH 7.3.  
Aliquoting is unnecessary for -20°C storage

\*\*\* 20ul sizes contain 0.1% BSA

For technical support and original validation data for this product please contact:  
T: 1 (888) 4PTGLAB (1-888-478-4522) (toll free in USA), or 1(312) 455-8498 (outside USA)  
E: [proteintech@ptglab.com](mailto:proteintech@ptglab.com)  
W: [ptglab.com](http://ptglab.com)

This product is exclusively available under Proteintech Group brand and is not available to purchase from any other manufacturer.

## Selected Validation Data



Immunofluorescent analysis of (-20°C Methanol) fixed HeLa cells using Coralite® Plus 488 CYP20A1 antibody (CL488-67433, Clone: 2A9E2) at dilution of 1:200.