

For Research Use Only

# CoraLite® Plus 488-conjugated RBM39 Monoclonal antibody



Catalog Number:CL488-67420

## Basic Information

<b>Catalog Number:</b> CL488-67420	<b>GenBank Accession Number:</b> BC141835	<b>Purification Method:</b> Protein A purification
<b>Size:</b> 100ul , Concentration: 1000 µg/ml by Nanodrop;	<b>GeneID (NCBI):</b> 9584	<b>CloneNo.:</b> 2D2C8
<b>Source:</b> Mouse	<b>Full Name:</b> RNA binding motif protein 39	<b>Recommended Dilutions:</b> IF 1:200-1:800
<b>Isotype:</b> IgG2b	<b>Calculated MW:</b> 530 aa, 59 kDa	<b>Excitation/Emission maxima wavelengths:</b> 488 nm / 515 nm
<b>Immunogen Catalog Number:</b> AG15766	<b>Observed MW:</b> 60-66 kDa	

## Applications

<b>Tested Applications:</b> FC (Intra), IF	<b>Positive Controls:</b> IF : HepG2 cells,
<b>Species Specificity:</b> Human, mouse, rat	

## Background Information

RBM39, also named as HCC1 or RNPC2, is a 530 amino acid protein, which contains three RRM (RNA recognition motif) domains and belongs to the splicing factor SR family. RBM39 is widely expressed in various tissues and with highly expression in pancreas, skeletal muscle, lung and brain. RBM39 is a transcriptional coactivator for steroid nuclear receptors ESR1/ER-alpha and ESR2/ER-beta, and JUN/AP-1. RBM39 may be involved in pre-mRNA splicing process.

## Storage

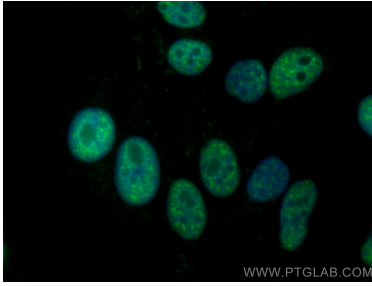
**Storage:**  
Store at -20°C. Avoid exposure to light.  
**Storage Buffer:**  
PBS with 50% Glycerol, 0.05% Proclin300, 0.5% BSA, pH 7.3.  
Aliquoting is unnecessary for -20°C storage

\*\*\* 20ul sizes contain 0.1% BSA

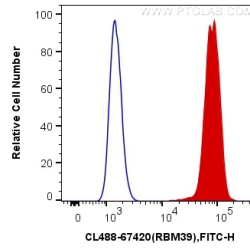
For technical support and original validation data for this product please contact:  
T: 1 (888) 4PTGLAB (1-888-478-4522) (toll free in USA), or 1(312) 455-8498 (outside USA) E: proteintech@ptglab.com W: ptglab.com

This product is exclusively available under Proteintech Group brand and is not available to purchase from any other manufacturer.

## Selected Validation Data



Immunofluorescent analysis of (4% PFA) fixed HepG2 cells using CoraLite® Plus 488 RBM39 antibody (CL488-67420, Clone: 2D2C8) at dilution of 1:400.



1X10<sup>6</sup> HepG2 cells were intracellularly stained with 0.4 ug CoraLite® Plus 488 Anti-Human RBM39 (CL488-67420, Clone:2D2C8) (red), or 0.4 ug Mouse IgG2b Isotype Control (CL488-66360-3, Clone: K11B8C4B5) (blue). Cells were fixed and permeabilized with Transcription Factor Staining Buffer Kit (PF00011).