

For Research Use Only

CoraLite® Plus 488-conjugated ANAPC5 Monoclonal antibody



Catalog Number: CL488-67348

Basic Information

| | | |
|--|---|---|
| Catalog Number: CL488-67348 | GenBank Accession Number: BC001081 | Purification Method: Protein G purification |
| Size: 100ul , Concentration: 1000 µg/ml by Nanodrop; | GeneID (NCBI): 51433 | CloneNo.: 2A7G5 |
| Source: Mouse | Full Name: anaphase promoting complex subunit 5 | Recommended Dilutions: IF 1:50-1:500 |
| Isotype: IgG1 | Calculated MW: 85 kDa | Excitation/Emission maxima wavelengths: 488 nm / 515 nm |
| Immunogen Catalog Number: AG7409 | Observed MW: 85 kDa, 72 kDa | |

Applications

Tested Applications:
IF

Species Specificity:
Human, Mouse, Rat

Positive Controls:

IF : human breast cancer tissue,

Background Information

Storage

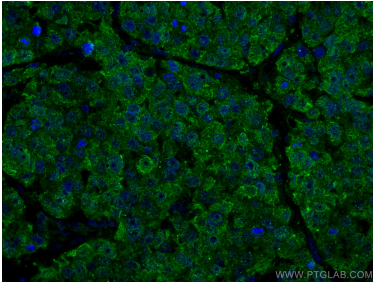
Storage:
Store at -20°C. Avoid exposure to light.
Storage Buffer:
PBS with 50% Glycerol, 0.05% Proclin300, 0.5% BSA, pH 7.3.
Aliquoting is unnecessary for -20°C storage

*** 20ul sizes contain 0.1% BSA

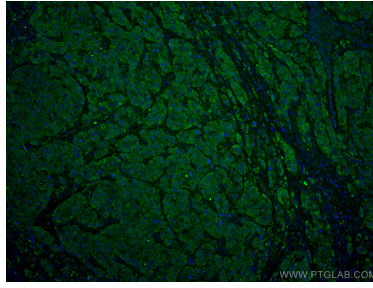
For technical support and original validation data for this product please contact:
T: 1 (888) 4PTGLAB (1-888-478-4522) (toll free in USA), or 1(312) 455-8498 (outside USA)
E: proteintech@ptglab.com
W: ptglab.com

This product is exclusively available under Proteintech Group brand and is not available to purchase from any other manufacturer.

Selected Validation Data



Immunofluorescent analysis of (4% PFA) fixed human breast cancer tissue using CoraLite® Plus 488 ANAPC5 antibody (CL488-67348, Clone: 2A7G5) at dilution of 1:200.



Immunofluorescent analysis of (4% PFA) fixed human breast cancer tissue using CoraLite® Plus 488 ANAPC5 antibody (CL488-67348, Clone: 2A7G5) at dilution of 1:200.