

For Research Use Only

CoraLite® Plus 488-conjugated SYNPO Monoclonal antibody



Catalog Number: CL488-67339

Basic Information

Catalog Number: CL488-67339	GenBank Accession Number: BC146665	Purification Method: Protein G purification
Size: 100ul , Concentration: 1000 µg/ml by Nanodrop;	GeneID (NCBI): 11346	CloneNo.: 1E1B1
Source: Mouse	Full Name: synaptopodin	Recommended Dilutions: IF 1:50-1:500
Isotype: IgG1	Calculated MW: 929 aa, 99 kDa	Excitation/Emission maxima wavelengths: 488 nm / 515 nm
Immunogen Catalog Number: AG15089	Observed MW: 100-110 kDa	

Applications

Tested Applications: IF	Positive Controls: IF : mouse brain tissue,
Species Specificity: Human, mouse, rat, pig	

Background Information

Synaptopodin is a actin-associated protein expressed in mature dendritic spines and renal podocytes. Several isoforms of synaptopodin have been reported: the 100 kDa neural form and 110 kDa renal form. 44-45 kDa may represent the degradation product of synaptopodin. As a podocyte specific protein, synaptopodin expression level was decreased in kidney but increased in the urinary podocytes from patients with preeclampsia, indicating that synaptopodin is a useful marker for preeclampsia. (15841212, 10555072)

Storage

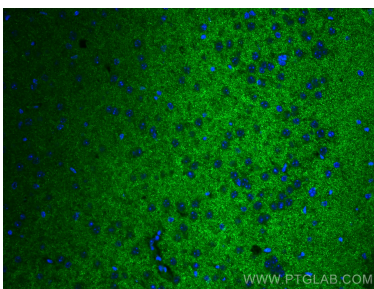
Storage:
Store at -20°C. Avoid exposure to light. Stable for one year after shipment.
Storage Buffer:
PBS with 50% Glycerol, 0.05% Proclin300, 0.5% BSA, pH 7.3.
Aliquoting is unnecessary for -20°C storage

*** 20ul sizes contain 0.1% BSA

For technical support and original validation data for this product please contact:
T: 1 (888) 4PTGLAB (1-888-478-4522) (toll free in USA), or 1(312) 455-8498 (outside USA)
E: proteintech@ptglab.com
W: ptglab.com

This product is exclusively available under Proteintech Group brand and is not available to purchase from any other manufacturer.

Selected Validation Data



Immunofluorescent analysis of (4% PFA) fixed mouse brain tissue using CoraLite® Plus 488 SYNPO antibody (CL488-67339, Clone: 1E1B1) at dilution of 1:200.