

For Research Use Only

# CoraLite® Plus 488-conjugated FSHB Monoclonal antibody



Catalog Number:CL488-67131

## Basic Information

<b>Catalog Number:</b> CL488-67131	<b>GenBank Accession Number:</b> BC113488	<b>Purification Method:</b> Protein A purification
<b>Size:</b> 100ul , Concentration: 1000 µg/ml by Nanodrop;	<b>GeneID (NCBI):</b> 2488	<b>CloneNo.:</b> 1B10A11
<b>Source:</b> Mouse	<b>Full Name:</b> follicle stimulating hormone, beta polypeptide	<b>Recommended Dilutions:</b> IF 1:50-1:500
<b>Isotype:</b> IgG2b	<b>Calculated MW:</b> 129 aa, 15 kDa	<b>Excitation/Emission maxima wavelengths:</b> 493 nm / 522 nm
<b>Immunogen Catalog Number:</b> AG13788	<b>Observed MW:</b> 15 kDa	

## Applications

<b>Tested Applications:</b> IF	<b>Positive Controls:</b> IF : HepG2 cells,
<b>Species Specificity:</b> Human	

## Background Information

The FSHB gene encodes the beta subunit of follicle-stimulating hormone (FSH), particularly expressed in gonadotroph cells within the anterior pituitary gland and plays a critical role in the regulation of gonadal function, pubertal maturation and reproductive processes in mammals. The transcription of the FSHB gene is critical for the production of the FSH hormone(PMID:28281143). And FSH is required for ovarian folliculogenesis in females, in males it promotes spermatogenesis in conjunction with testosterone(PMID:11739331). Mutations in FSHB gene would result in infertility both in men and women (PMID: 23766128).

## Storage

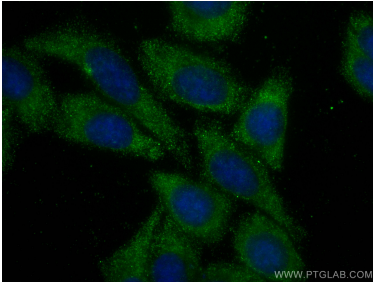
**Storage:**  
Store at -20°C. Avoid exposure to light. Stable for one year after shipment.  
**Storage Buffer:**  
PBS with 50% Glycerol, 0.05% Proclin300, 0.5% BSA, pH 7.3.  
Aliquoting is unnecessary for -20°C storage

\*\*\* 20ul sizes contain 0.1% BSA

For technical support and original validation data for this product please contact:  
T: 1 (888) 4PTGLAB (1-888-478-4522) (toll free in USA), or 1(312) 455-8498 (outside USA)  
E: proteintech@ptglab.com  
W: ptglab.com

This product is exclusively available under Proteintech Group brand and is not available to purchase from any other manufacturer.

## Selected Validation Data



Immunofluorescent analysis of (-20°C Ethanol) fixed HepG2 cells using CoraLite® Plus 488 FSHB antibody (CL488-67131, Clone: 1B10A11 ) at dilution of 1:200.