

For Research Use Only

CoraLite® Plus 488-conjugated L1CAM Monoclonal antibody



Catalog Number: CL488-67115

Basic Information

Catalog Number: CL488-67115	GenBank Accession Number: BC126229	Purification Method: Protein G purification
Size: 100ul , Concentration: 1000 µg/ml by Nanodrop;	GeneID (NCBI): 3897	CloneNo.: 3H7B9
Source: Mouse	Full Name: L1 cell adhesion molecule	Recommended Dilutions: IF 1:50-1:500
Isotype: IgG1	Calculated MW: 1257 aa, 140 kDa	Excitation/Emission maxima wavelengths: 488 nm / 515 nm
Immunogen Catalog Number: AG17706	Observed MW: 220 kDa	

Applications

Tested Applications: IF	Positive Controls: IF : mouse brain tissue,
Species Specificity: Human, Pig, Mouse, Rat	

Background Information

L1CAM, also known as NCAM-L1 or CD171, is a cell adhesion molecule of the immunoglobulin superfamily. It is a 200-220 kDa transmembrane glycoprotein composed of six Ig-like domains and five fibronectin type III repeats followed by a transmembrane region and a highly conserved cytoplasmic tail (PMID: 3412448; 22796939). L1CAM is primarily expressed in the nervous system and is involved in neuron-neuron adhesion, neurite fasciculation, outgrowth of neurites, cerebellar granule cell migration, neurite outgrowth on Schwann cells and interactions among epithelial cells of intestinal crypts (PMID: 3412448; 10767310). L1CAM is overexpressed in many human cancers and is often associated with bad prognosis (PMID: 27267927; 26111503).

Storage

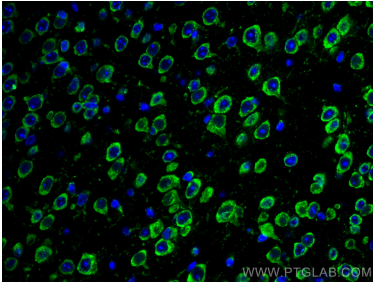
Storage:
Store at -20°C. Avoid exposure to light.
Storage Buffer:
PBS with 50% Glycerol, 0.05% Proclin300, 0.5% BSA, pH 7.3.
Aliquoting is unnecessary for -20°C storage

*** 20ul sizes contain 0.1% BSA

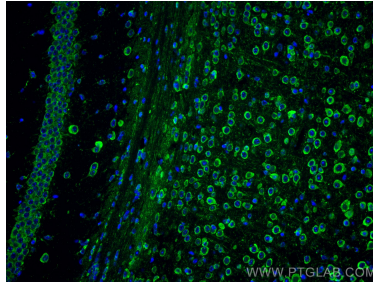
For technical support and original validation data for this product please contact:
T: 1 (888) 4PTGLAB (1-888-478-4522) (toll free in USA), or 1(312) 455-8498 (outside USA)
E: proteintech@ptglab.com
W: ptglab.com

This product is exclusively available under Proteintech Group brand and is not available to purchase from any other manufacturer.

Selected Validation Data



Immunofluorescent analysis of (4% PFA) fixed mouse brain tissue using CoraLite® Plus 488 L1CAM antibody (CL488-67115, Clone: 3H7B9) at dilution of 1:200.



Immunofluorescent analysis of (4% PFA) fixed mouse brain tissue using CoraLite® Plus 488 L1CAM antibody (CL488-67115, Clone: 3H7B9) at dilution of 1:200.